

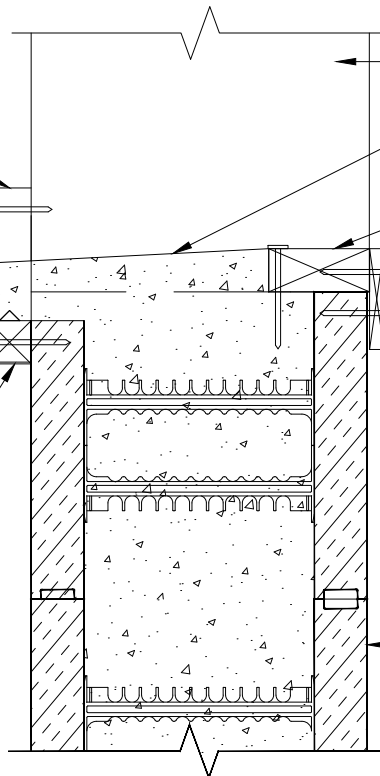
**WOOD WINDOW BUCK  
SLOPED CONCRETE SILL**

2x4 CUT TO FIT  
AND FASTEN TO  
 $\frac{3}{4}$ " PLY.

2x4 FORM FOR EDGE OF  
CONCRETE SILL.  
SEE NOTES.

FASTEN INTO  
WEB FURRING STRIP

2x2 TO FORM  
BOTTOM OF CONC. SILL  
C/W  $\frac{1}{4}$ " CHAMFER GLUED  
TO TOP TO FORM DRIP EDGE.  
SEE NOTES.



$\frac{3}{4}$ " PLY  
FINISHED CONC.  
SILL SURFACE  
2x4 W/ 6" LONG  
FASTENER TO ANCHOR  
INTO CONCRETE.  
SEE NOTES.

1x4 FASTENED TO  
WEB FURRING STRIP  
AND 2x4.  
SEE NOTES.

ELEMENT ICF

**SECTION A-A**

NOTE:  
Adjust 2x lumber to suit specified slope of concrete sill.



©Copyright Logix Brands Ltd. (2024) All rights reserved. No part of the work contained herein as covered by this copyright may be reproduced or used in any form, or any means - graphic, electronic or mechanical, including without limitation photocopying.

By using these drawings, you agree to assume all risks associated therewith. See [Logixbrands.com/Disclaimer-Drawings](https://Logixbrands.com/Disclaimer-Drawings) for a full copy of disclaimer.

Drawing:  
5.12.1.2

Date:  
MAR 03/23

Pg:  
1/1

Title:

SLOPED CONCRETE SILL