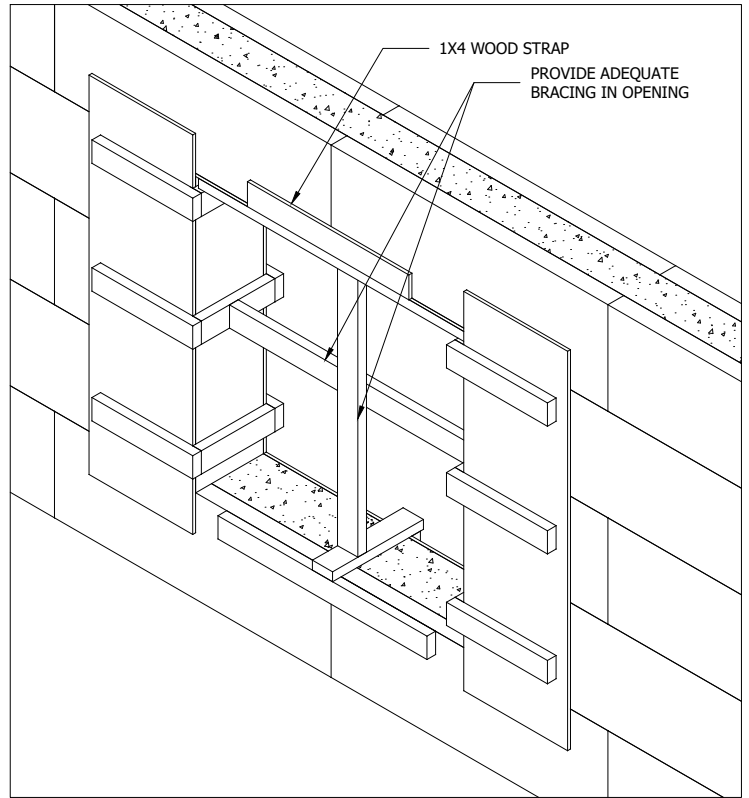
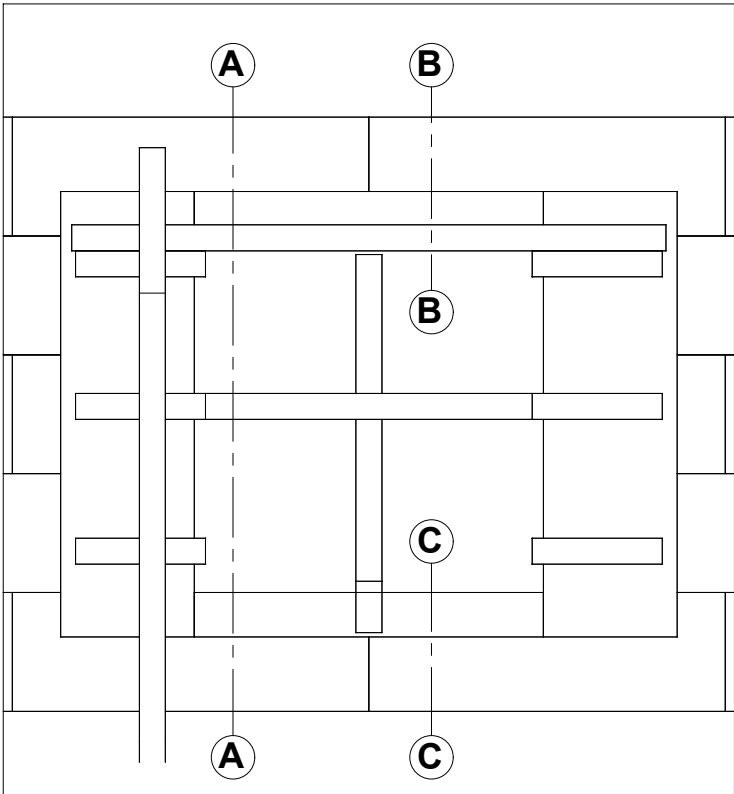


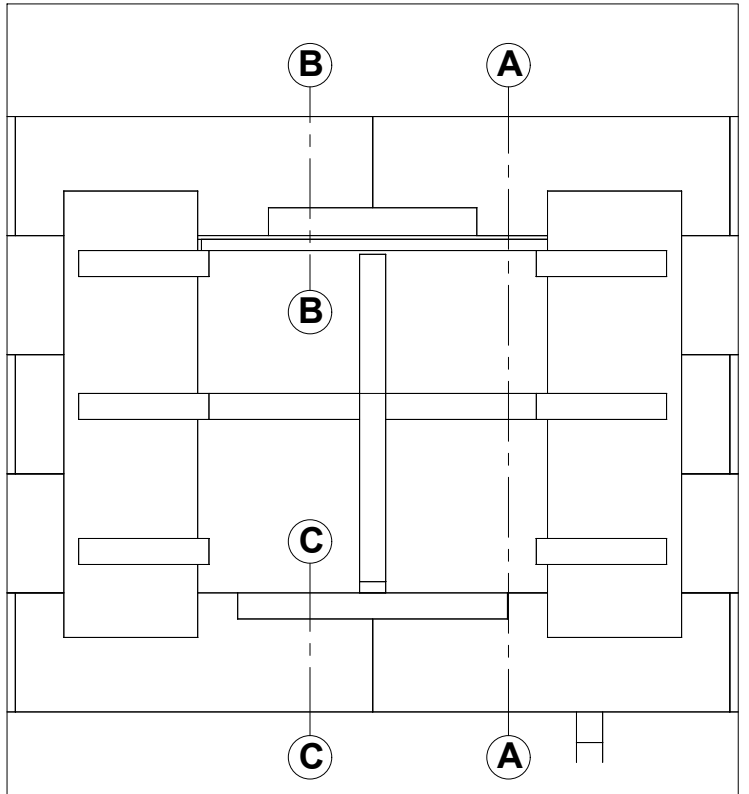
FORM SUPPORT - EXTERIOR SIDE



FORM SUPPORT - INTERIOR SIDE



ELEVATION - EXTERIOR SIDE



ELEVATION - INTERIOR SIDE

NOTE:

1. For 4" exposed concrete trim around opening on the interior face apply same form support and detail as shown for exterior face details.
2. Unless otherwise shown, temporary form work material includes 2x4 and plysheets.



©Copyright Logix Brands Ltd. (2024) All rights reserved. No part of the work contained herein as covered by this copyright may be reproduced or used in any form, or any means - graphic, electronic or mechanical, including without limitation photocopying.

By using these drawings, you agree to assume all risks associated therewith. See Logixbrands.com/Disclaimer-Drawings for a full copy of disclaimer.

Drawing:
5.12.1.3

Date:
MAR 03/23

Pg:
1/2

Title: **WINDOW OPENING - TEMPORARY FORM SUPPORT FOR EXPOSED CONCRETE W/ 4" TRIM (1 OF 2)**