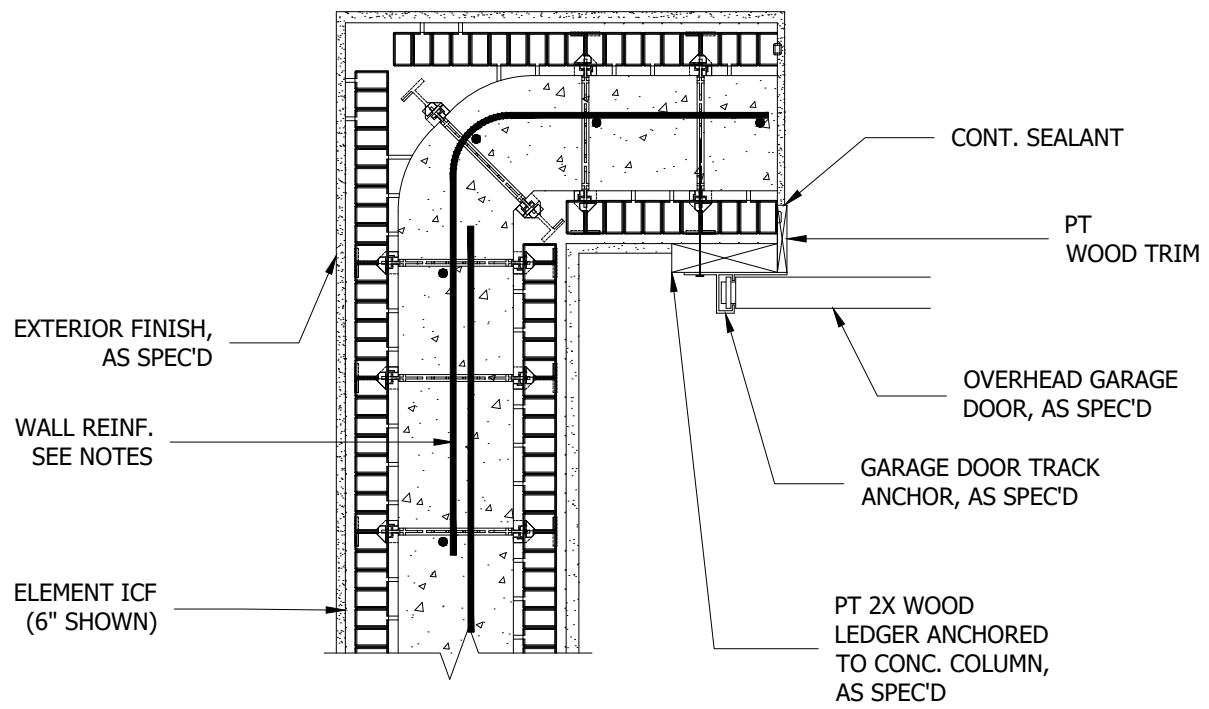


**AGAINST CAST-IN-PLACE CONCRETE**



**AGAINST LOGIX**

**NOTES:**

- 1. Refer to the Element Prescriptive Engineering for reinforcement design of Element ICF walls.

	<small>©Copyright Logix Brands Ltd. (2024) All rights reserved. No part of the work contained herein as covered by this copyright may be reproduced or used in any form, or any means - graphic, electronic or mechanical, including without limitation photocopying.</small>	Drawing: <b>5.12.3.1</b>	Date: <b>MAR 03/23</b>	Pg: <b>1/1</b>
	<small>By using these drawings, you agree to assume all risks associated therewith. See Logixbrands.com/Disclaimer-Drawings for a full copy of disclaimer.</small>	Title: <b>OVERHEAD GARAGE DOOR WITH CAST-IN-PLACE COLUMN</b>		
<small>ElementICF.com A Product By Logix Brands Ltd. 1-866-944-0153</small>				