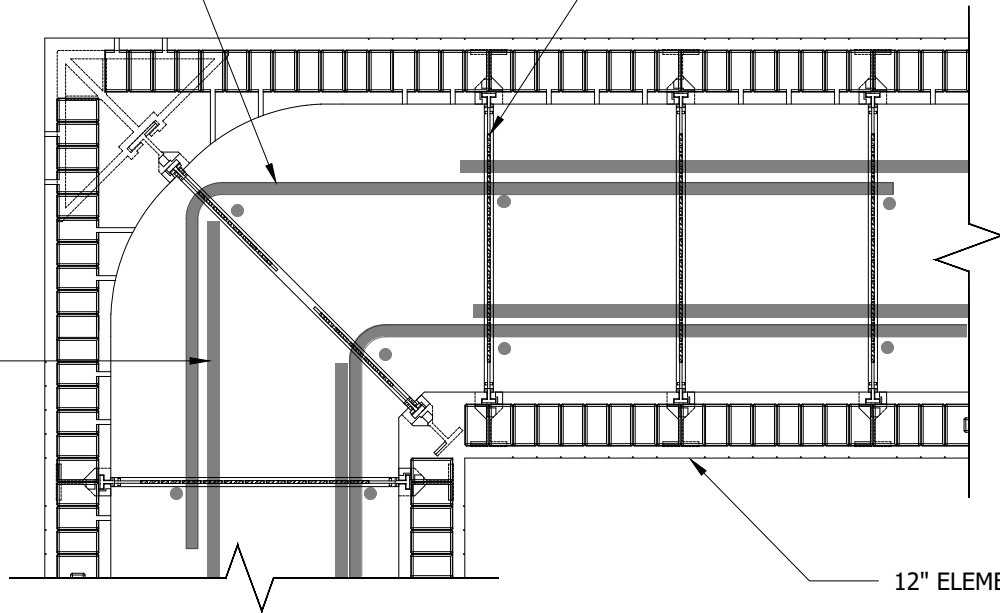


90° BEND HORIZONTAL CORNER REINFORCEMENT

REBAR SLOT LOCATIONS SHADED FOR CLARITY

HORIZONTAL ICF WALL REINF.



12" ELEMENT ICF

**ELEMENT 12" CORNER**

**NOTES:**

1. Refer to the Element Prescriptive Engineering for reinforcement design of Element ICF walls.
2. Details shown are typical corner reinforcement examples. Actual corner reinforcement will be dictated by design and code requirements.
3. Rebar shown are #4 (15M).
4. Lap length between horizontal corner bar and horizontal ICF wall reinforcement is 24" minimum for #4 (15M) bars or smaller.



©Copyright Logix Brands Ltd. (2024) All rights reserved. No part of the work contained herein as covered by this copyright may be reproduced or used in any form, or any means - graphic, electronic or mechanical, including without limitation photocopying.

By using these drawings, you agree to assume all risks associated therewith. See [Logixbrands.com/Disclaimer-Drawings](https://Logixbrands.com/Disclaimer-Drawings) for a full copy of disclaimer.

Drawing:  
**5.14.2.3 R1**

Date:  
**DEC 29/25**

Pg:  
**1/1**

Title:  
**CORNER WALL REINFORCEMENT  
12in ELEMENT**