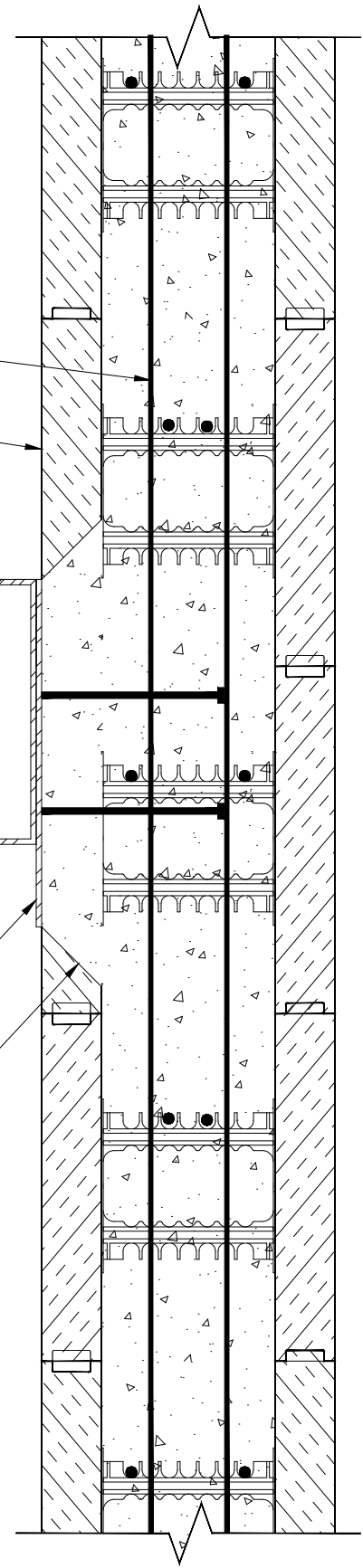


ICF WALL REINF. SEE NOTES.
 ELEMENT ICF (8" SHOWN)

STRUCTURAL STEEL BEAM

STEEL BEAM, AS SPEC'D
 FIELD TRIM ICF TO SUIT.



NOTES:

1. Refer to the Element Prescriptive Engineering for reinforcement design of Element ICF walls.
2. A protective cover, such as tarp, should be placed over Element form panels in the vicinity where on-site welding or torch work is conducted.



©Copyright Logix Brands Ltd. (2024) All rights reserved. No part of the work contained herein as covered by this copyright may be reproduced or used in any form, or any means - graphic, electronic or mechanical, including without limitation photocopying.
 By using these drawings, you agree to assume all risks associated therewith. See Logixbrands.com/Disclaimer-Drawings for a full copy of disclaimer.

Drawing:
 5.15.2.4

Date:
 Mar 03/23

Pg:
 1/1

Title:
 STRUCTURAL STEEL CHANNEL BEAM
 (2 OF 2)