

EXTERIOR BACKFILL & FINISH, AS SPEC'D

FRAMED WALL

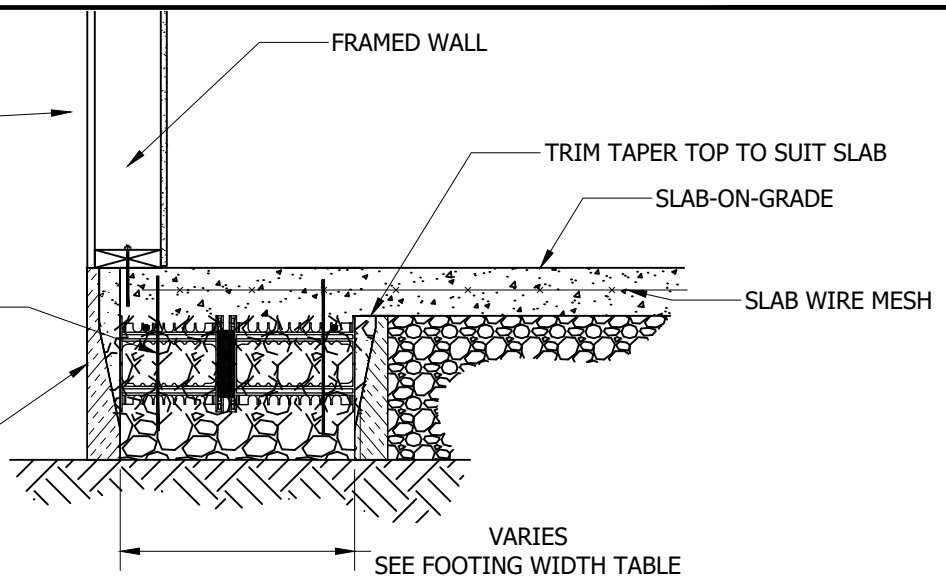
TRIM TAPER TOP TO SUIT SLAB

SLAB-ON-GRADE

REINF.

SLAB WIRE MESH

ELEMENT TAPER TOP W/ ELEMENT CLIP. CRUSHED STONE FTG. MIN. 20" FTG WIDTH



**ALASKAN SLAB
DETAIL WITH
FRAMED WALL**

EXTERIOR BACKFILL & FINISH, AS SPEC'D

FLEX TIE™

CLIP

FLEX TIE™

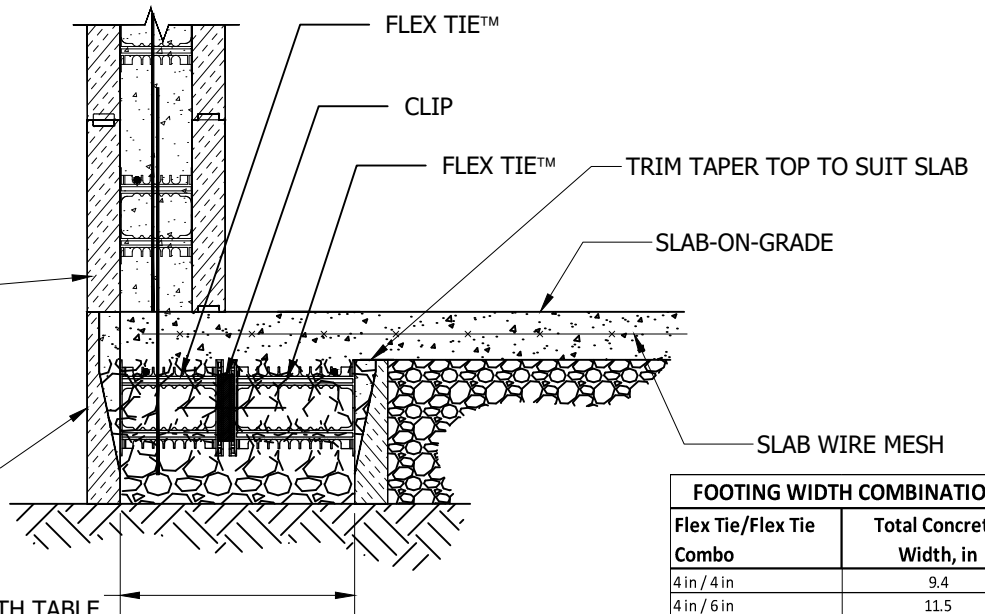
TRIM TAPER TOP TO SUIT SLAB

SLAB-ON-GRADE

ELEMENT TAPER TOP W/ ELEMENT CLIP. CRUSHED STONE FTG.

SLAB WIRE MESH

VARIES
SEE FOOTING WIDTH TABLE



**ALASKAN SLAB
DETAIL WITH
CONTINUOUS ICF**

FOOTING WIDTH COMBINATIONS	
Flex Tie/Flex Tie Combo	Total Concrete Width, in
4 in / 4 in	9.4
4 in / 6 in	11.5
4 in / 8 in	13.5
4 in / 10 in	15.4
4 in / 12 in	17.4
6 in / 6 in	13.7
6 in / 8 in	15.7
6 in / 10 in	17.5
6 in / 12 in	19.5
8 in / 8 in	17.7
8 in / 10 in	19.5
8 in / 12 in	21.5
10 in / 10 in	21.4
10 in / 12 in	23.4
12 in / 12 in	25.4

NOTES:

1. Refer to the Element Prescriptive Engineering for reinforcement design of Element ICF walls.



©Copyright Logix Brands Ltd. (2024) All rights reserved. No part of the work contained herein as covered by this copyright may be reproduced or used in any form, or any means - graphic, electronic or mechanical, including without limitation photocopying.

By using these drawings, you agree to assume all risks associated therewith. See Logixbrands.com/Disclaimer-Drawings for a full copy of disclaimer.

Drawing:
5.3.4.1 R1

Date:
Mar 25/26

Pg:
1/1

Title:
**ALASKAN SLAB DETAIL WITH
ELEMENT CLIP**