

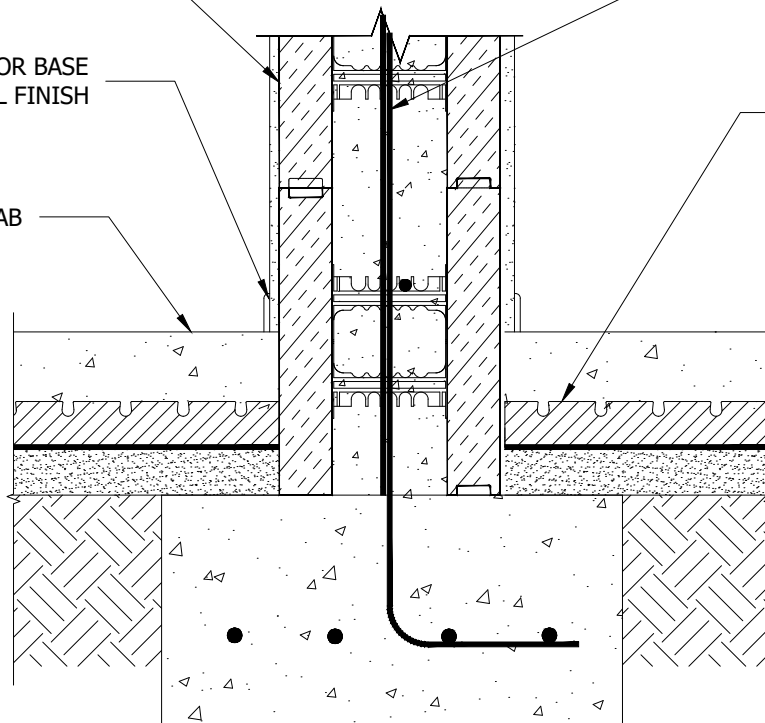
ELEMENT ICF
(6" SHOWN)

ICF WALL
REINF.
SEE NOTES.

INTERIOR BASE
AND WALL FINISH

HEAT-SHEET
RADIANT FLOOR INSULATION
BELOW SLAB. SEE NOTES.

CONC. SLAB



NOTES:

1. Refer to the Element Prescriptive Engineering for reinforcement design of Element ICF walls.
2. Visit Heat-Sheet.com for more information on Heat-Sheet radiant floor insulation.
3. Bottom course of Element is shown with the bottom interlocks removed. Optionally, leaving interlocks in place will increase wall or footing height by 0.525"



©Copyright Logix Brands Ltd. (2024) All rights reserved. No part of the work contained herein as covered by this copyright may be reproduced or used in any form, or any means - graphic, electronic or mechanical, including without limitation photocopying.

By using these drawings, you agree to assume all risks associated therewith. See Logixbrands.com/Disclaimer-Drawings for a full copy of disclaimer.

Drawing:
5.4.2.1

Date:
Mar 03/23

Pg:
1/1

Title:

ICF BASE AT INTERIOR WALL