

FRAMED WALL ABOVE-GRADE

2x12 SILL W/ ANCHOR BOLT, AS SPEC'D

SUBFLOOR

RIGID INSULATION, EXTERIOR FINISH, AS SPEC'D

EIFS AT EXPOSED FOUNDATION WALL

ELEMENT DOUBLE TAPER TOP

GRADE

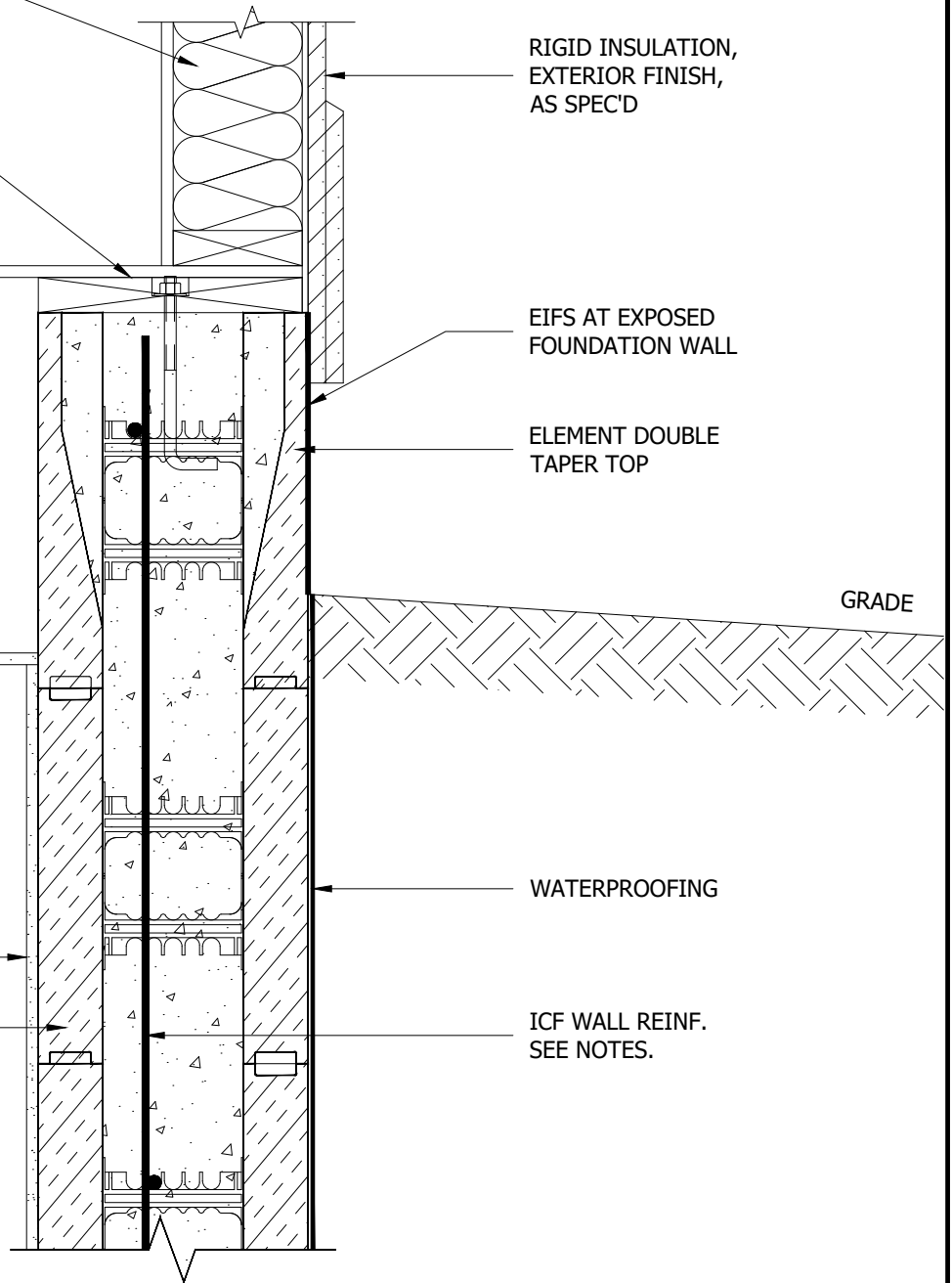
FLOOR JOIST, AS SPEC'D

WATERPROOFING

DRYWALL

ICF WALL REINF. SEE NOTES.

ELEMENT ICF (6" SHOWN)



NOTES:

1. Refer to the Element Prescriptive Engineering for reinforcement design of Element ICF walls.



©Copyright Logix Brands Ltd. (2024) All rights reserved. No part of the work contained herein as covered by this copyright may be reproduced or used in any form, or any means - graphic, electronic or mechanical, including without limitation photocopying.

By using these drawings, you agree to assume all risks associated therewith. See [Logixbrands.com/Disclaimer-Drawings](https://Logixbrands.com/Disclaimer-Drawings) for a full copy of disclaimer.

Drawing:  
5.6.2.18

Date:  
Mar 03/23

Pg:  
2/2

Title:  
WOOD FLOOR JOIST PARALLEL TO WALL