

CONCRETE TOPPING,
AS SPEC'D

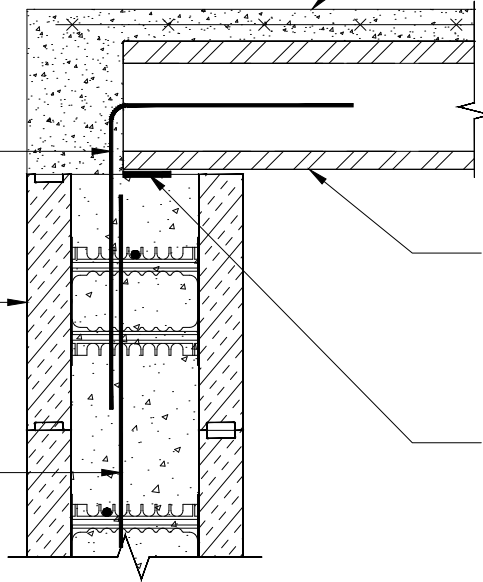
90° BENT REBAR,
AS SPEC'D.

ELEMENT ICF
(8" SHOWN)

ICF WALL REINF.
SEE NOTES.

SPANCRETE PRECAST HOLLOW CORE SLAB.
SEE NOTES.

BEARING PLATE STRIP,
AS SPEC'D



BEARING END

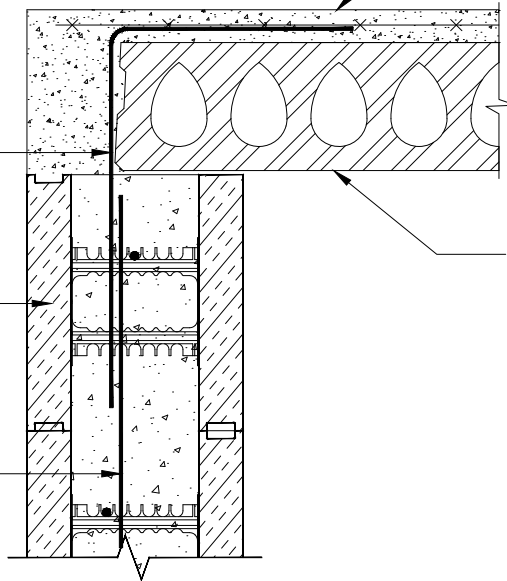
CONCRETE TOPPING,
AS SPEC'D

90° BENT REBAR,
AS SPEC'D.

ELEMENT ICF
(8" SHOWN)

ICF WALL REINF.
SEE NOTES.

SPANCRETE PRECAST HOLLOW CORE SLAB.
SEE NOTES.



NON-BEARING END

NOTES:

1. Refer to the Element Prescriptive Engineering for reinforcement design of Element ICF walls.



©Copyright Logix Brands Ltd. (2024) All rights reserved. No part of the work contained herein as covered by this copyright may be reproduced or used in any form, or any means - graphic, electronic or mechanical, including without limitation photocopying.

By using these drawings, you agree to assume all risks associated therewith. See Logixbrands.com/Disclaimer-Drawings for a full copy of disclaimer.

Drawing:
5.6.5.6

Date:
Mar 03/23

Pg:
1/1

Title:
SPANCRETE TOPPING FLUSH TO ELEMENT