

# THE HEARTLAND 750

Design, Floor Plan & Elevations



[ElementicF.com](https://www.elementicf.com)



The drawings and images contained in these pages are current at the time of printing. However, the drawings and images may differ slightly when final plan sets are requested, as designs are subject to change.

# THE HEARTLAND 750 DESIGN



## FEATURES:

2 Bedroom, 1 Bathroom, Kitchen, Living Room

## INTERIOR LIVING SPACE:

716 sq ft

## APPROXIMATE EXTERIOR DIMENSIONS:

40' W x 24' D

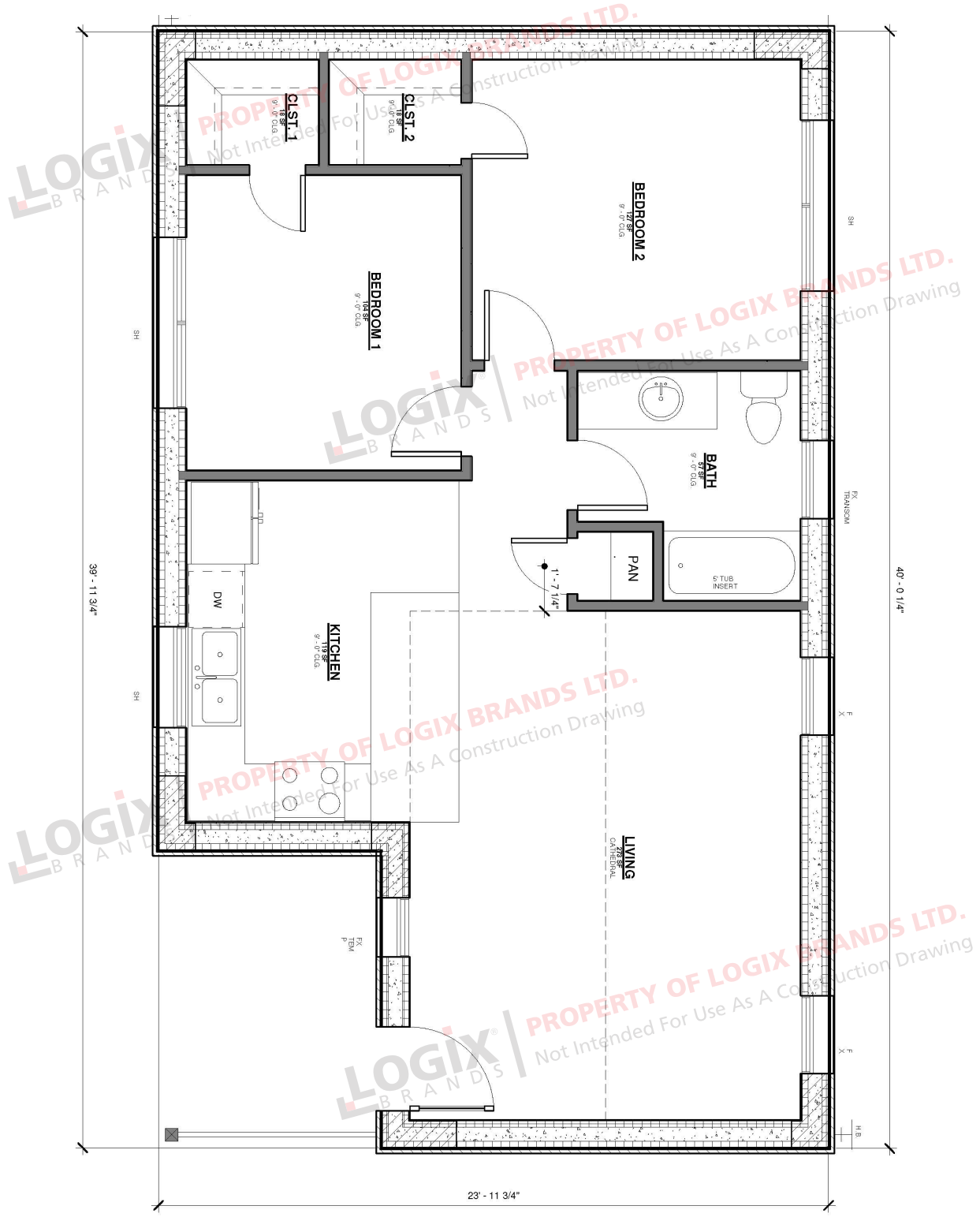


## ROOM SCHEDULE:

Name	Level	Area	Perimeter
Bedroom 2	First Floor	127 SF	45' - 1"
Living	First Floor	273 SF	81' - 5 3/4"
Bedroom 1	First Floor	104 SF	40' - 9 1/2"
Clst. 2	First Floor	18 SF	17' - 0"
Clst. 1	First Floor	18 SF	17' - 0"
Bath	First Floor	57 SF	32' - 5"
Kitchen	First Floor	119 SF	43' - 11 1/2"

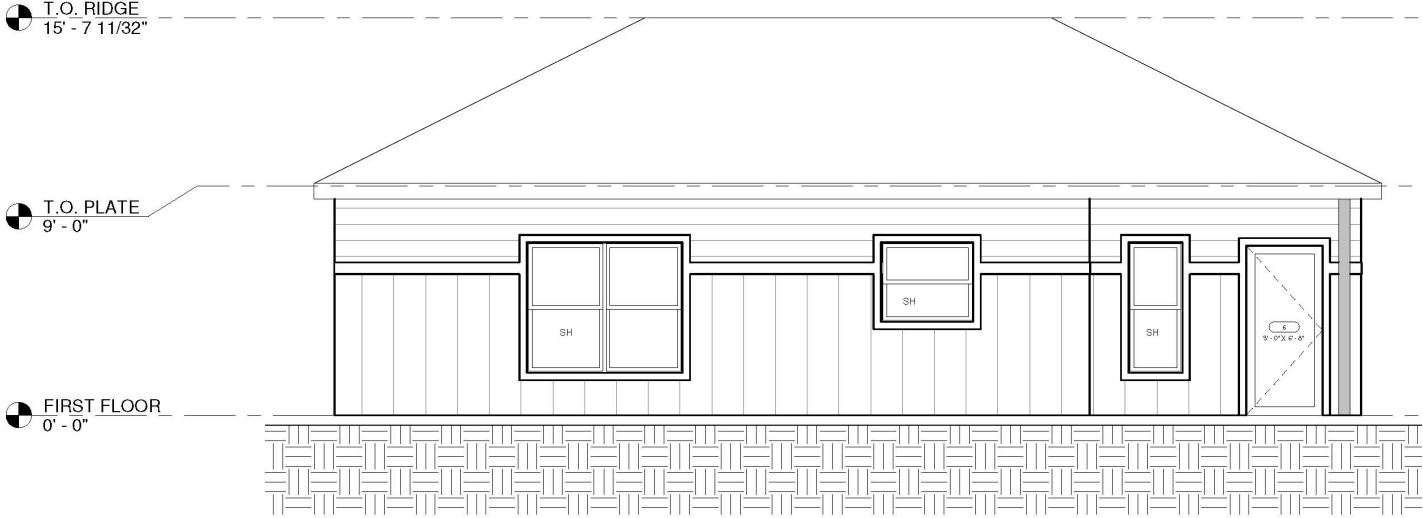
# THE HEARTLAND 750

## Floor Plan

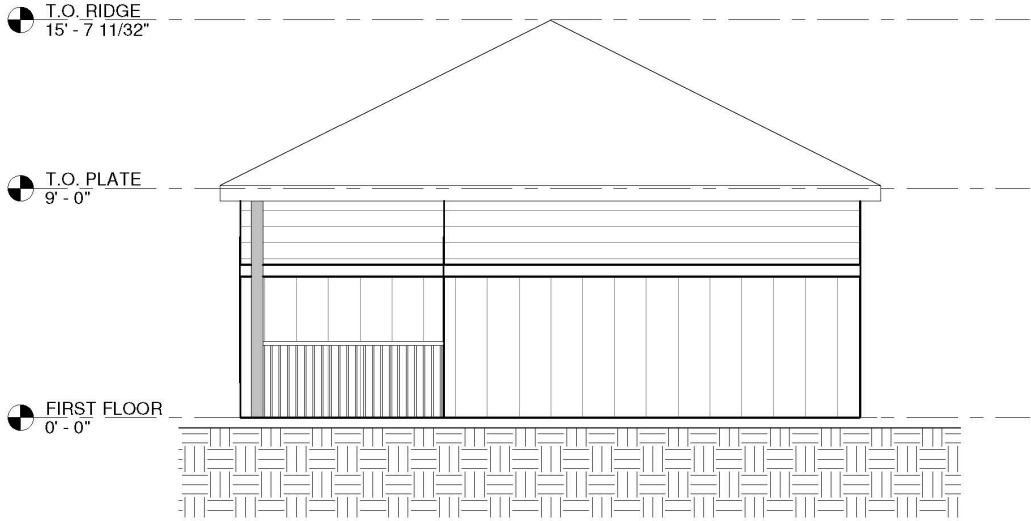


# THE HEARTLAND 750

## Elevations



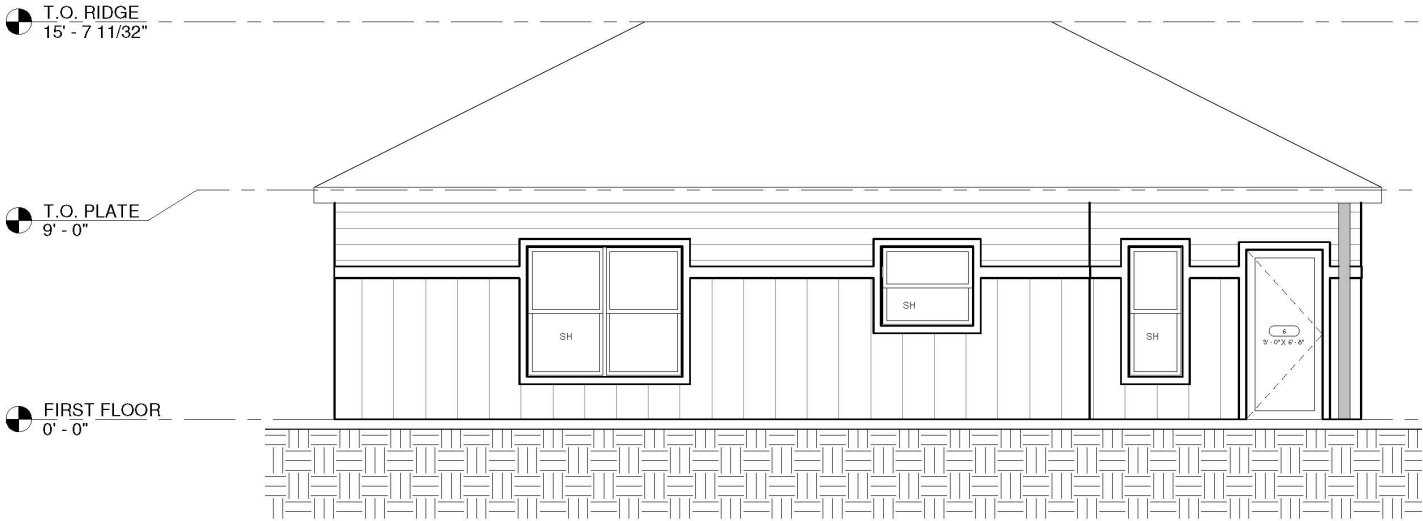
FRONT ELEVATION



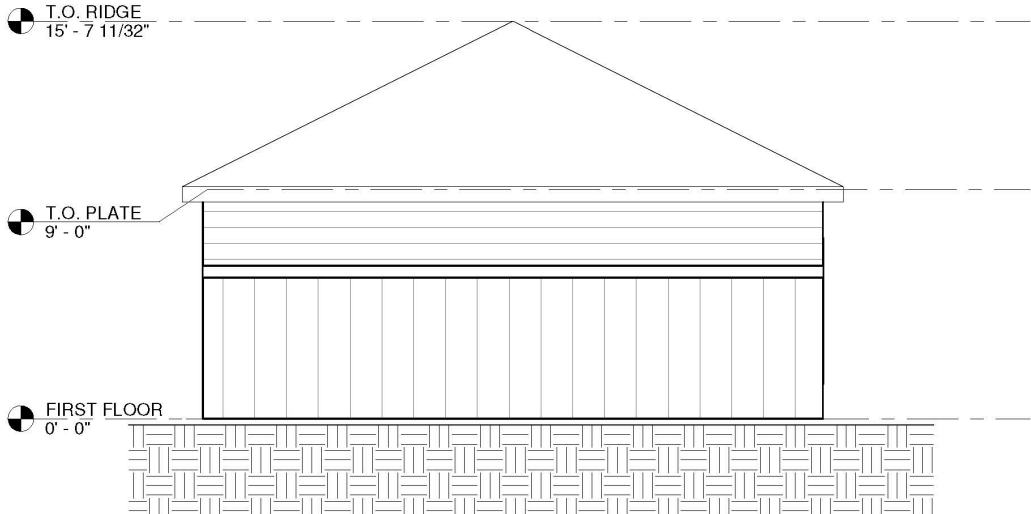
RIGHT ELEVATION

# THE HEARTLAND 750

## Elevations



### BACK ELEVATION



### LEFT ELEVATION

# THE HEARTLAND 750

DESIGN, FLOOR PLAN & ELEVATIONS



## REQUEST A QUOTE & ORDER A PLAN SET BASED ON THIS DESIGN

Your Element ICF advisor can refer you to a designer who will provide a quotation for your complete plan set including any required modifications.

Please note that some locations may require specific engineering and/or local code adoptions. Be sure to check with your contractor or local building authority to see what is required for your area.

[Go to the Online Collection and Request a Quote for this Plan Set](#)



## CONNECT WITH A LOCAL MANUFACTURER

**888.838.5038**

330 Cain Drive  
Haysville, KS 67060-2004

**888.453.5961**

11581-272 St.  
Acheson, AB T7X 6E9

**888.706.7709**

840 Division St.  
Cobourg, ON K9A 5V2

**888.453.5961**

6333 Unsworth Rd.  
Chilliwack, BC V2R 5M3

**877.789.7622**

35 Headingley Rd.  
Headingley, MB R4H 0A8



© Copyright Logix Brands Ltd. (2023) All rights reserved.

No part of the work contained herein as covered by this copyright may be reproduced or used in any form, or any means – graphic, electronic or mechanical, including without limitation photocopying. By using these products, you agree to assume all risks associated therewith. See [LogixBrands.com/Disclaimer-General](https://LogixBrands.com/Disclaimer-General) for a full copy of disclaimer.

**ELEMENTICF**<sup>®</sup>  
LOGIX BRANDS

[info@elementicf.com](mailto:info@elementicf.com)  
[Elementicf.com](https://Elementicf.com)

A PRODUCT BY  
**LOGIX**<sup>®</sup>  
BRANDS

Copyright of Logix Brands Ltd. All Rights Reserved.