

# THE WEST COAST 1100

## WITH BASEMENT

Design, Floor Plan & Elevations



[ElementicF.com](https://www.ElementicF.com)



The drawings and images contained in these pages are current at the time of printing. However, the drawings and images may differ slightly when final plan sets are requested, as designs are subject to change.

# THE WEST COAST 1100 WITH BASEMENT DESIGN



## FEATURES:

2 Storeys , 4 Bedrooms, 4 Bathrooms,  
Kitchen, Living Room (Including Basement)

## INTERIOR LIVING SPACE:

Main Floor - 820 sq ft

Second Floor - 330 sq ft

Basement - 740 sq ft

## APPROXIMATE EXTERIOR DIMENSIONS:

31' W x 35' D



### ROOM SCHEDULE:

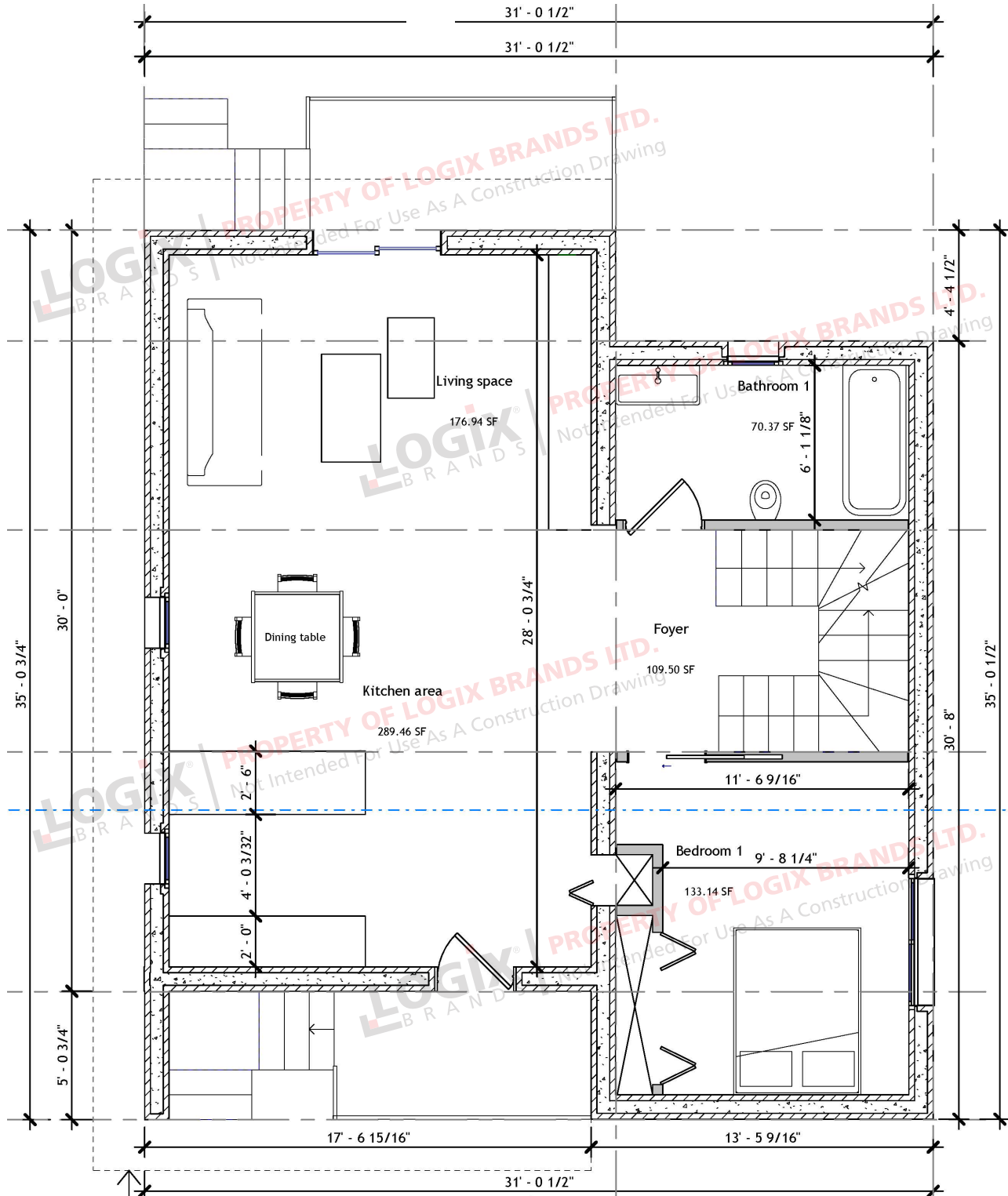
Name	Level	Area	Perimeter
Bedroom	Basement	54' - 1 5/8"	151.77 SF
Bathroom	Basement	35' - 3 3/8"	70.37 SF
Bedroom	Basement	63' - 0 1/4"	177.61 SF
Laundry	Basement	49' - 4"	151.50 SF
Foyer	Basement	51' - 3 1/8"	147.65 SF
Bathroom 4	Basement	26' - 3 7/32"	40.74 SF
Bedroom 1	Main Floor	49' - 3 31/32"	133.14 SF
Living Space	Main Floor	54' - 6 3/8"	176.94 SF
Kitchen Area	Main Floor	68' - 0 7/8"	289.46 SF
Foyer	Main Floor	42' - 8 27/32"	109.50 SF
Bathroom 1	Main Floor	35' - 3 3/8"	70.37 SF
Bathroom 2	Upper Floor	47' - 4 5/32"	70.38 SF
Primary Bdrm	Upper Floor	96' - 4 11/32"	237.57 SF



# THE WEST COAST 1100

WITH BASEMENT

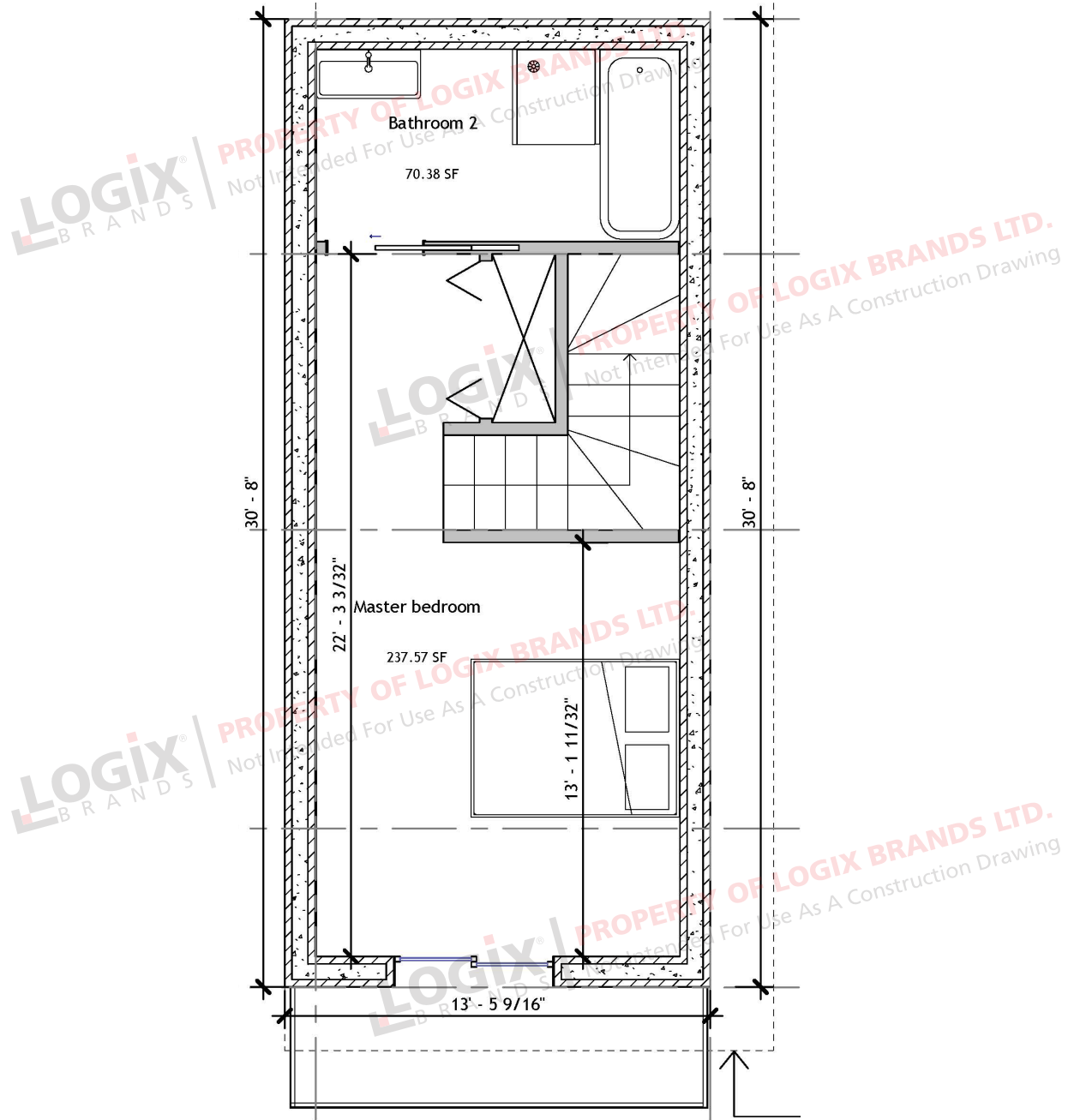
Floor Plan - Main Level



# THE WEST COAST 1100

WITH BASEMENT

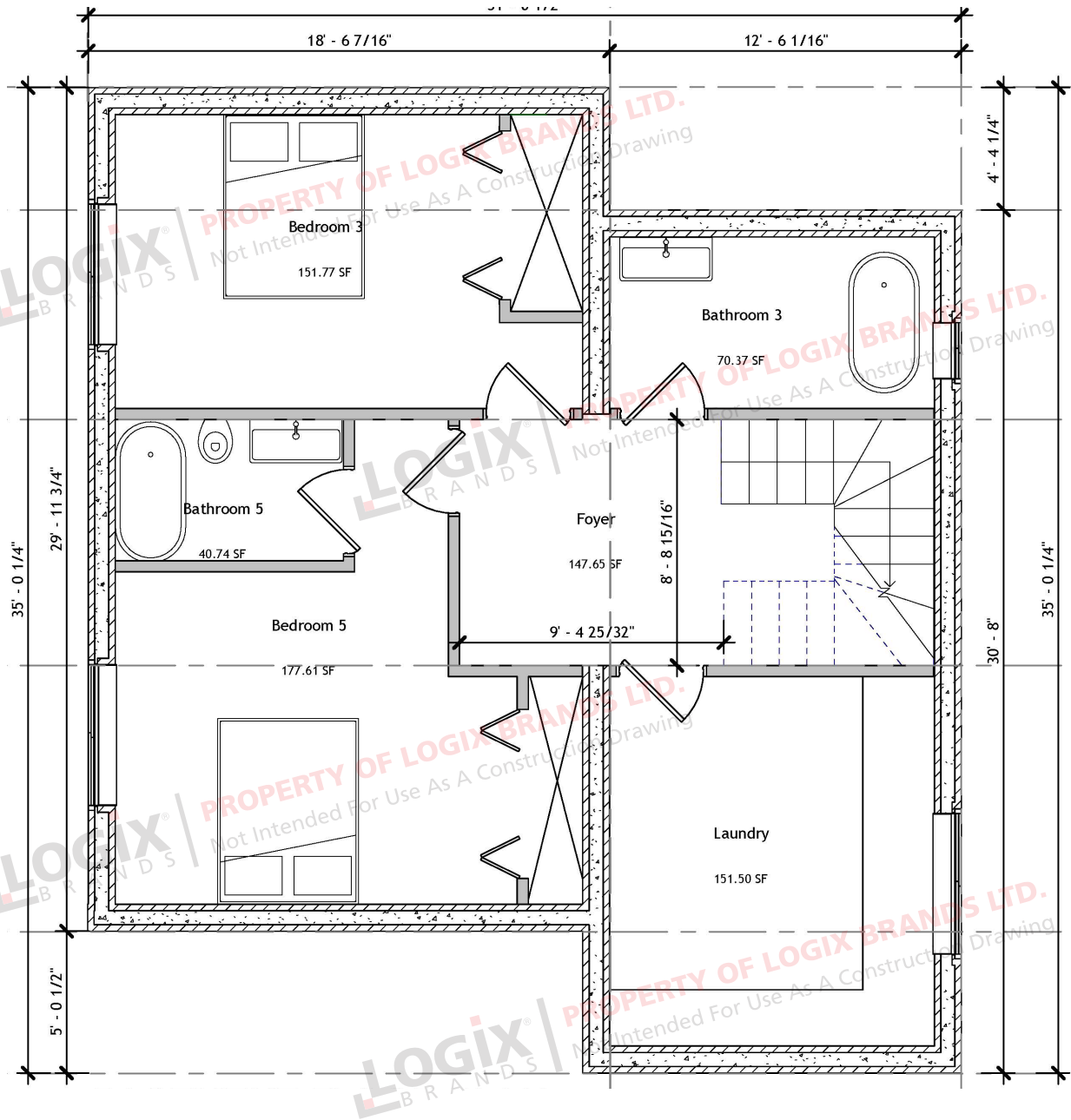
Floor Plan - Upper Level



# THE WEST COAST 1100

WITH BASEMENT

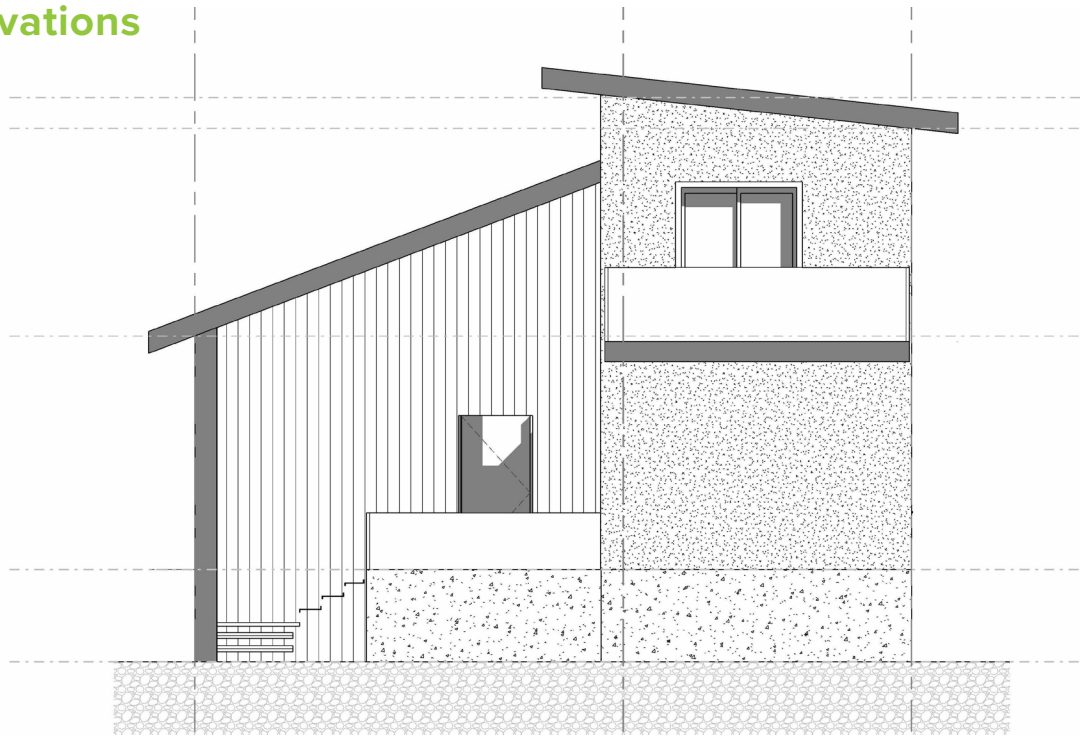
## Floor Plan - Basement



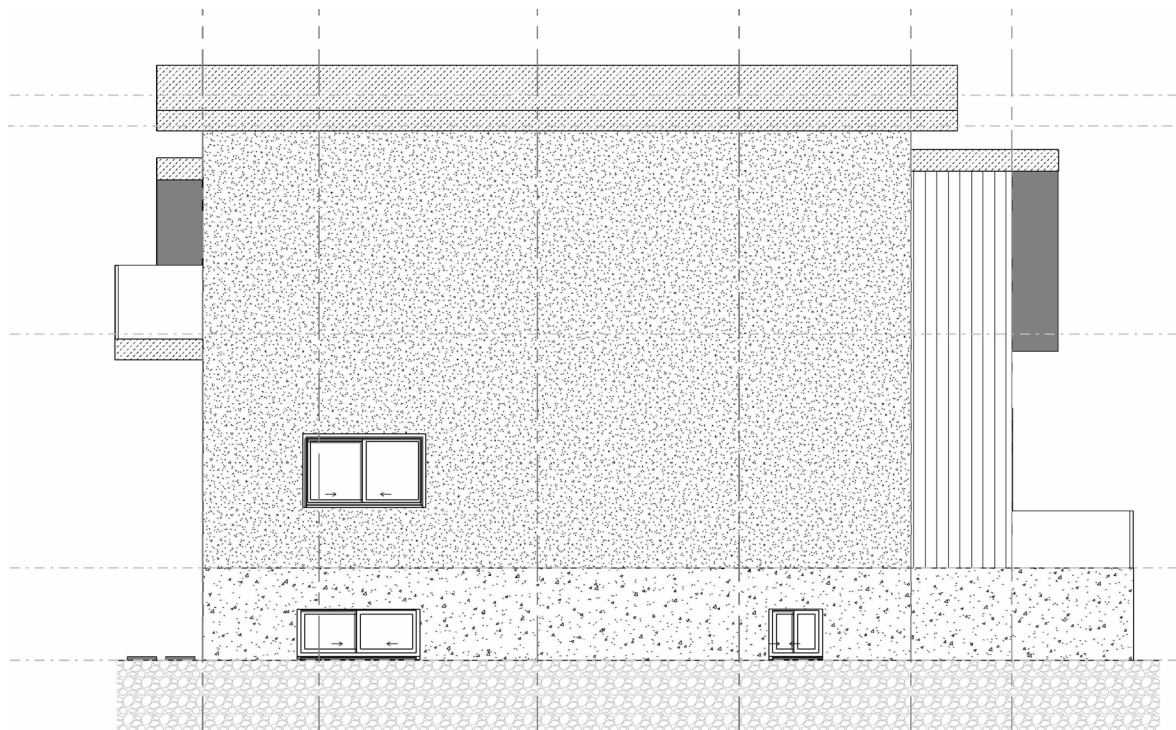
# THE WEST COAST 1100

WITH BASEMENT

Elevations



FRONT ELEVATION

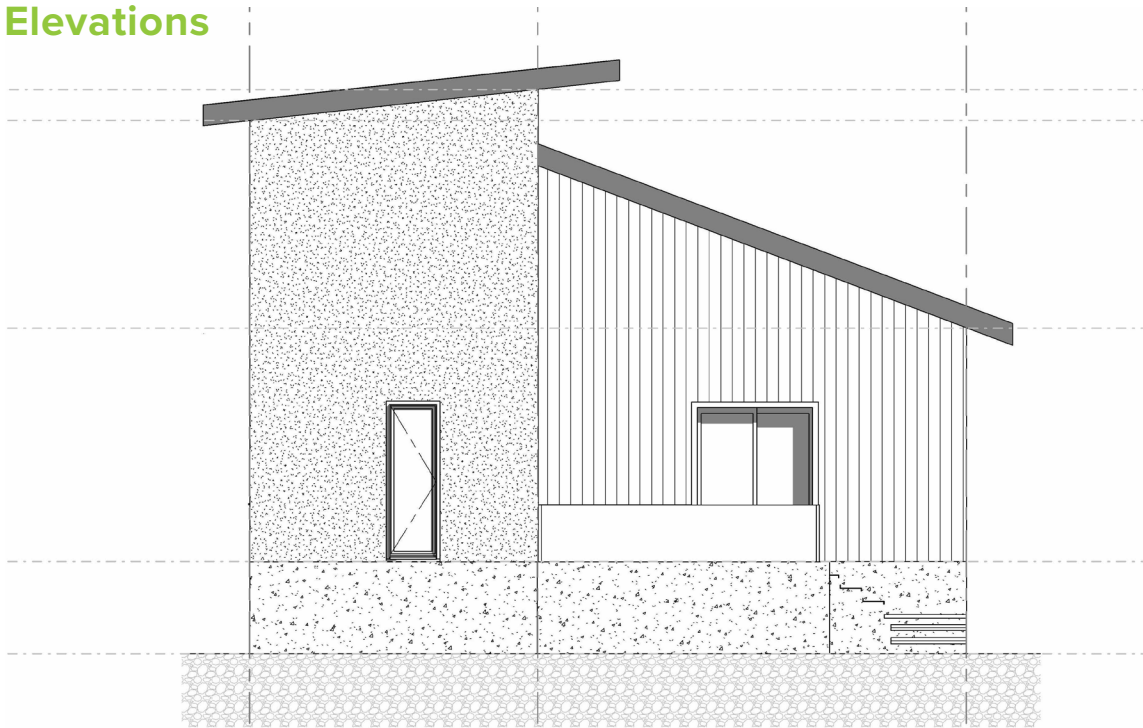


RIGHT ELEVATION

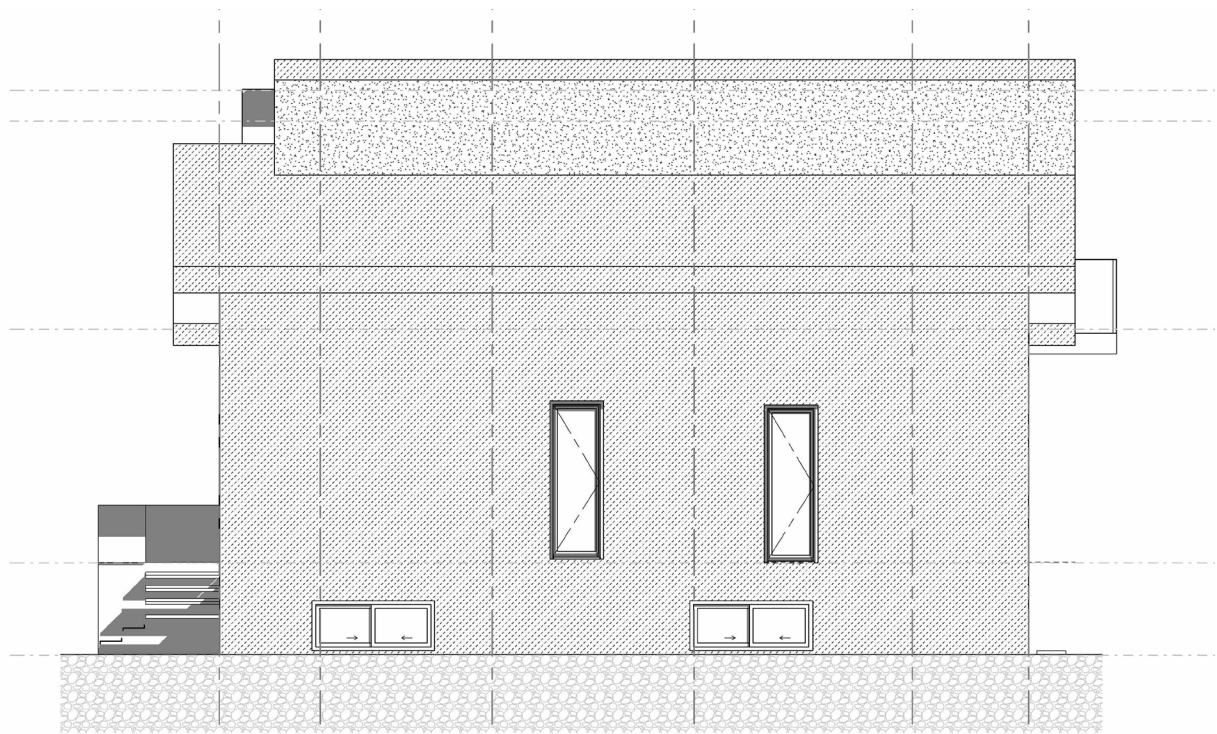
# THE WEST COAST 1100

WITH BASEMENT

Elevations



BACK ELEVATION



LEFT ELEVATION

# THE WEST COAST 1100

DESIGN, FLOOR PLAN & ELEVATIONS



## REQUEST A QUOTE & ORDER A PLAN SET BASED ON THIS DESIGN

Your Element ICF advisor can refer you to a designer who will provide a quotation for your complete plan set including any required modifications.

Please note that some locations may require specific engineering and/or local code adoptions. Be sure to check with your contractor or local building authority to see what is required for your area.

[Go to the Online Collection and Request a Quote for this Plan Set](#)





## CONNECT WITH A LOCAL MANUFACTURER

**888.838.5038**

330 Cain Drive  
Haysville, KS 67060-2004

**888.453.5961**

11581-272 St.  
Acheson, AB T7X 6E9

**888.706.7709**

840 Division St.  
Cobourg, ON K9A 5V2

**888.453.5961**

6333 Unsworth Rd.  
Chilliwack, BC V2R 5M3

**877.789.7622**

35 Headingley Rd.  
Headingley, MB R4H 0A8



© Copyright Logix Brands Ltd. (2023) All rights reserved.

No part of the work contained herein as covered by this copyright may be reproduced or used in any form, or any means – graphic, electronic or mechanical, including without limitation photocopying. By using these products, you agree to assume all risks associated therewith. See [LogixBrands.com/Disclaimer-General](https://LogixBrands.com/Disclaimer-General) for a full copy of disclaimer.

**ELEMENTICF**<sup>®</sup>  
LOGIX BRANDS

[info@elementicf.com](mailto:info@elementicf.com)  
[Elementicf.com](https://Elementicf.com)

A PRODUCT BY  
**LOGIX**<sup>®</sup>  
BRANDS

Copyright of Logix Brands Ltd. All Rights Reserved.