

# THE WEST COAST 1250

## WITH BASEMENT

Design, Floor Plan & Elevations



[ElementicF.com](https://www.ElementicF.com)



The drawings and images contained in these pages are current at the time of printing. However, the drawings and images may differ slightly when final plan sets are requested, as designs are subject to change.

# THE WEST COAST 1250 WITH BASEMENT DESIGN



## FEATURES:

2 Storeys , 4 Bedrooms, 4 Bathrooms,  
Kitchen, Living Room (Including Basement)

## INTERIOR LIVING SPACE:

Main Floor - 914 sq ft

Second Floor - 385 sq ft

Basement - 864 sq ft

## APPROXIMATE EXTERIOR DIMENSIONS:

39' W x 31' D



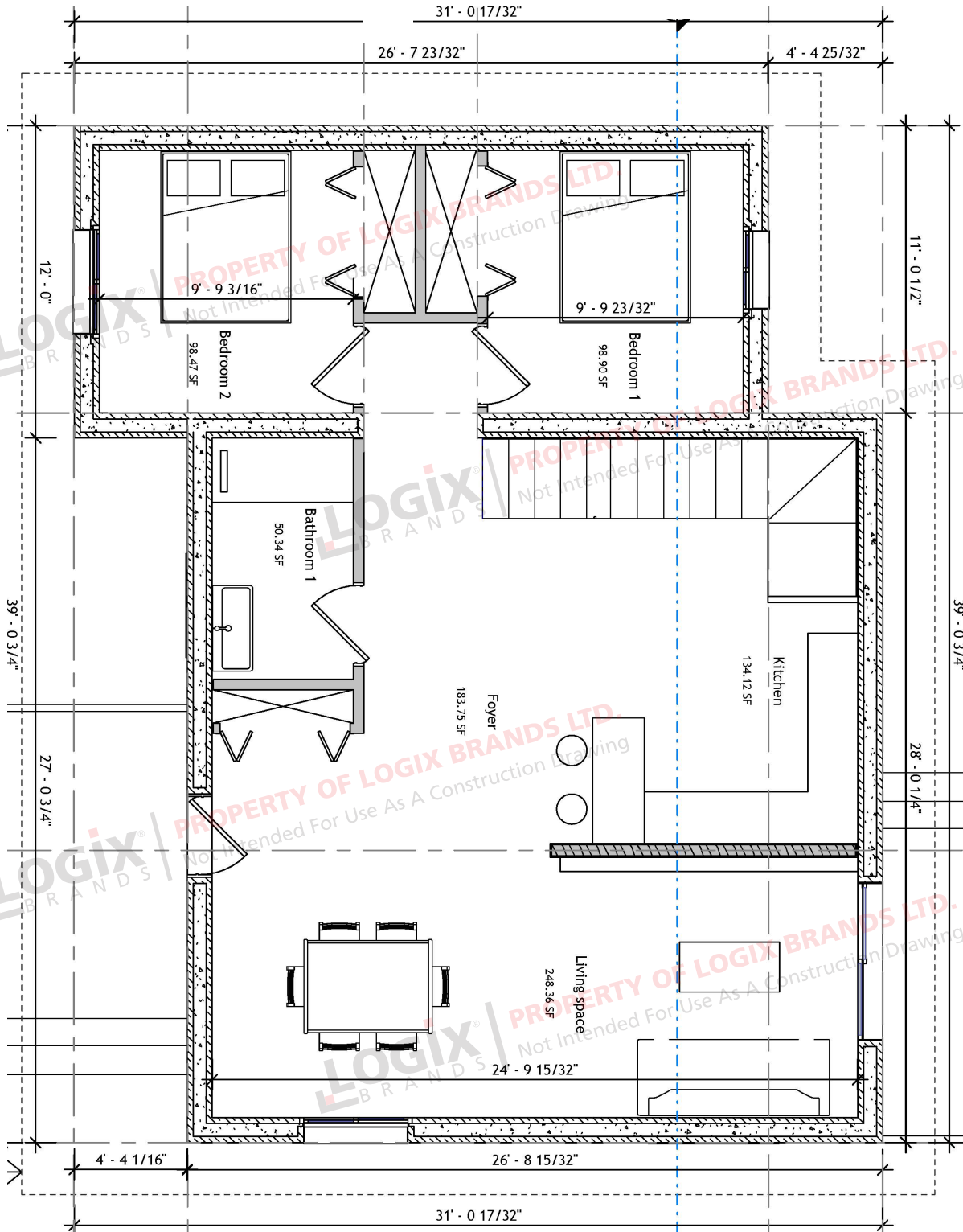
## ROOM SCHEDULE:

Name	Level	Area	Perimeter
Bathroom 3	Basement	23' - 9 13/16"	34.58 SF
Bedroom 4	Basement	43' - 1 7/32"	92.43 SF
Foyer	Basement	110' - 9 5/32"	165.87 SF
Home Gym	Basement	69' - 6 15/16"	247.89 SF
Laundry	Basement	41' - 4 5/32"	99.05 SF
Living Room 2	Basement	56' - 3 17/32"	194.11 SF
Office Nook	Basement	22' - 6 5/8"	31.77 SF
Bathroom 1	Main Floor	29' - 4 27/32"	50.34 SF
Bedroom 1	Main Floor	39' - 9 13/32"	98.90 SF
Bedroom 2	Main Floor	39' - 8 3/8"	98.47 SF
Foyer	Main Floor	85' - 8 7/8"	183.75 SF
Kitchen	Main Floor	47' - 11 7/16"	134.12 SF
Living Space	Main Floor	69' - 7 7/16"	248.36 SF
Bathroom 2	Upper Level	33' - 2 3/32"	62.53 SF
Primary Bdrm	Upper Level	99' - 4 19/32"	300.12 SF

# THE WEST COAST 1250

WITH BASEMENT

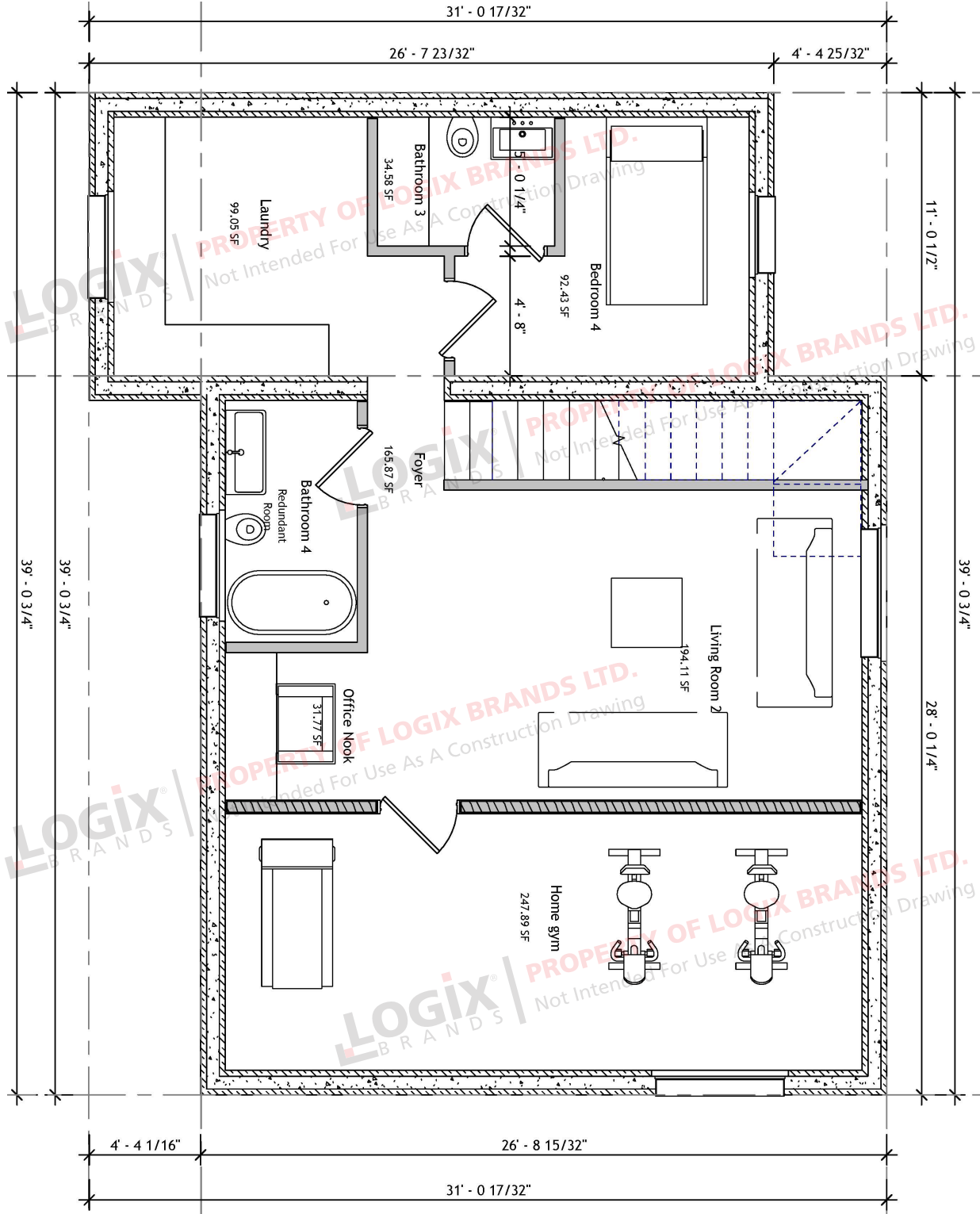
Floor Plan - Main Level



# THE WEST COAST 1250

WITH BASEMENT

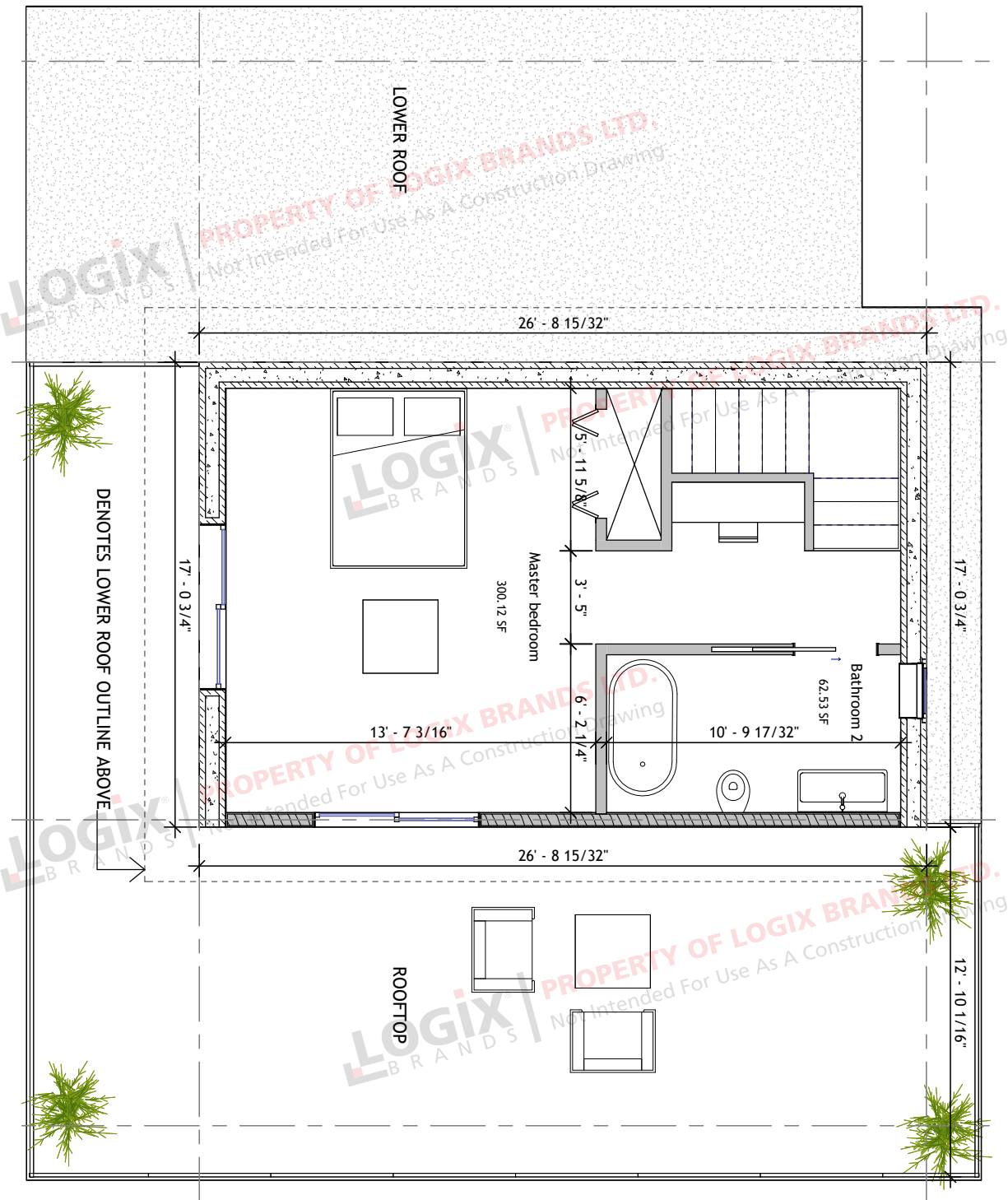
## Floor Plan - Upper Level



# THE WEST COAST 1250

WITH BASEMENT

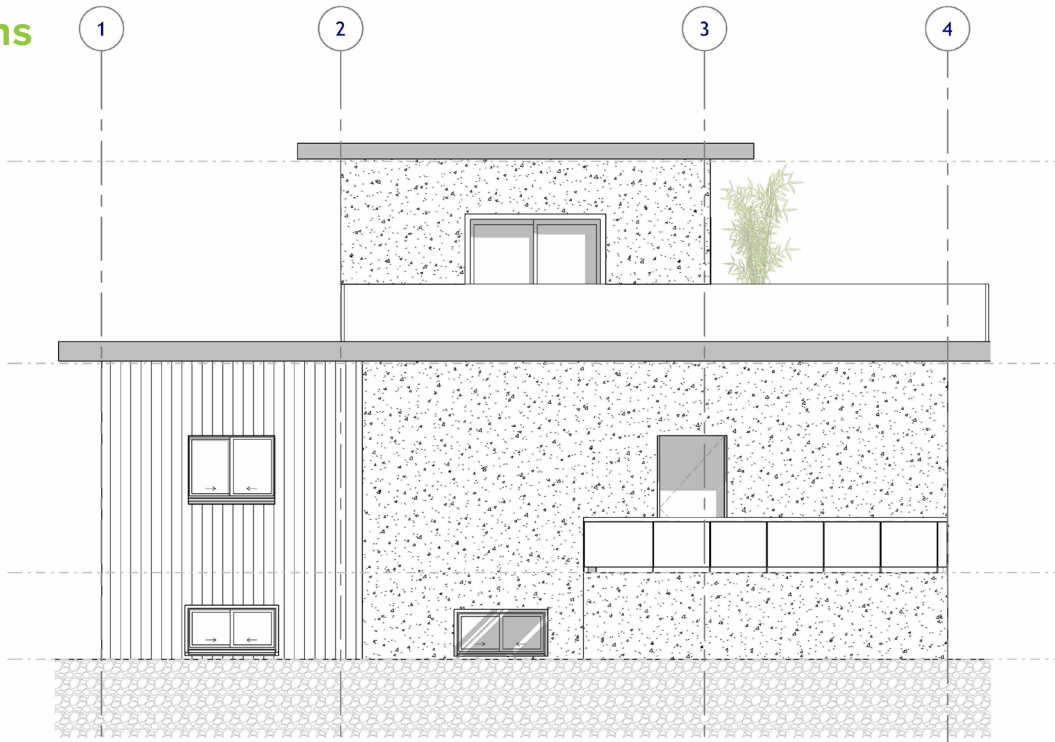
Floor Plan - Basement



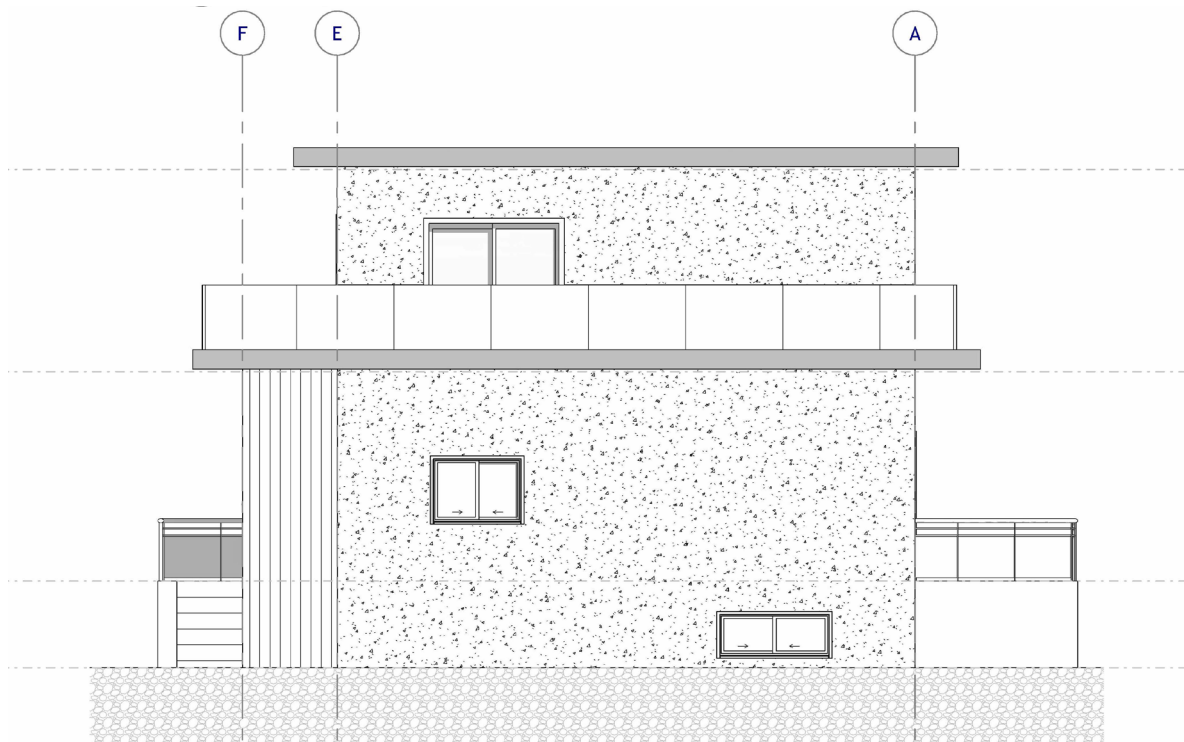
# THE WEST COAST 1250

WITH BASEMENT

Elevations



FRONT ELEVATION



RIGHT ELEVATION

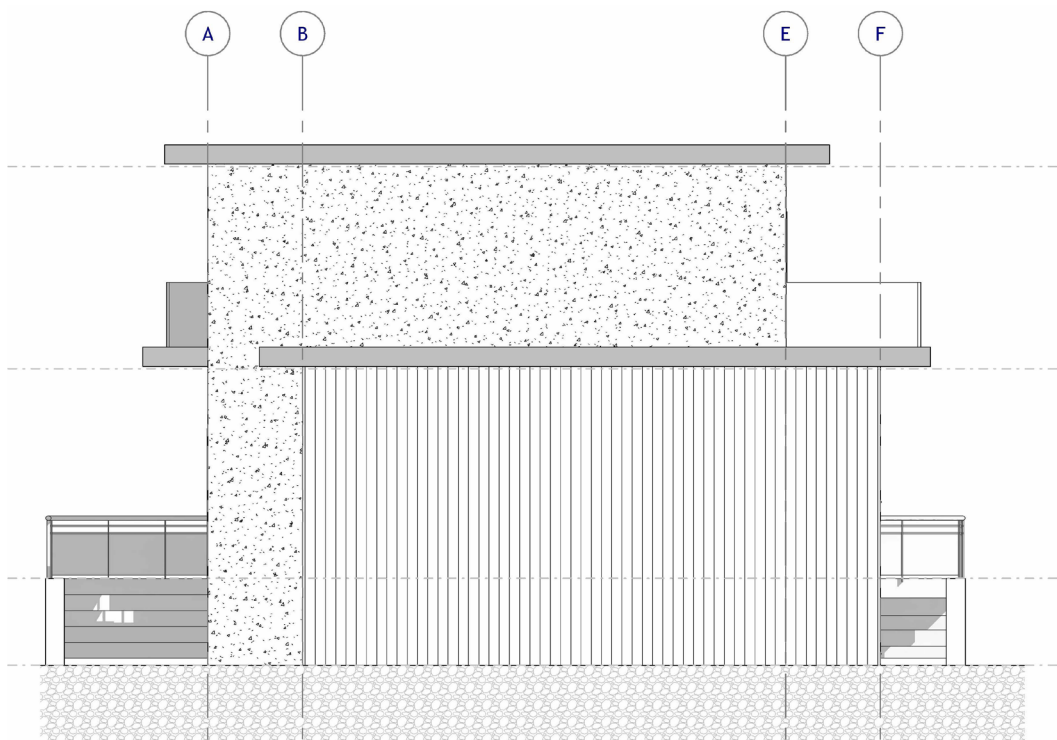
# THE WEST COAST 1250

WITH BASEMENT

Elevations



## BACK ELEVATION



## LEFT ELEVATION

# THE WEST COAST 1250

DESIGN, FLOOR PLAN & ELEVATIONS



## REQUEST A QUOTE & ORDER A PLAN SET BASED ON THIS DESIGN

Your Element ICF advisor can refer you to a designer who will provide a quotation for your complete plan set including any required modifications.

Please note that some locations may require specific engineering and/or local code adoptions. Be sure to check with your contractor or local building authority to see what is required for your area.

[Go to the Online Collection and Request a Quote for this Plan Set](#)





## CONNECT WITH A LOCAL MANUFACTURER

**888.838.5038**

330 Cain Drive  
Haysville, KS 67060-2004

**888.453.5961**

11581-272 St.  
Acheson, AB T7X 6E9

**888.706.7709**

840 Division St.  
Cobourg, ON K9A 5V2

**888.453.5961**

6333 Unsworth Rd.  
Chilliwack, BC V2R 5M3

**877.789.7622**

35 Headingley Rd.  
Headingley, MB R4H 0A8



© Copyright Logix Brands Ltd. (2023) All rights reserved.

No part of the work contained herein as covered by this copyright may be reproduced or used in any form, or any means – graphic, electronic or mechanical, including without limitation photocopying. By using these products, you agree to assume all risks associated therewith. See [LogixBrands.com/Disclaimer-General](https://LogixBrands.com/Disclaimer-General) for a full copy of disclaimer.

**ELEMENTICF**<sup>®</sup>  
LOGIX BRANDS

[info@elementicf.com](mailto:info@elementicf.com)  
[Elementicf.com](https://Elementicf.com)

A PRODUCT BY  
**LOGIX**<sup>®</sup>  
BRANDS

Copyright of Logix Brands Ltd. All Rights Reserved.