

THE WEST COAST 750

Design, Floor Plan & Elevations



[ElementicF.com](https://www.elementicf.com)



The drawings and images contained in these pages are current at the time of printing. However, the drawings and images may differ slightly when final plan sets are requested, as designs are subject to change.

THE WEST COAST 750 DESIGN



FEATURES:

2 Bedroom, 1 Bathroom, Kitchen, Living Rm

INTERIOR LIVING SPACE:

726 sq ft

APPROXIMATE EXTERIOR DIMENSIONS:

30' W x 31' D

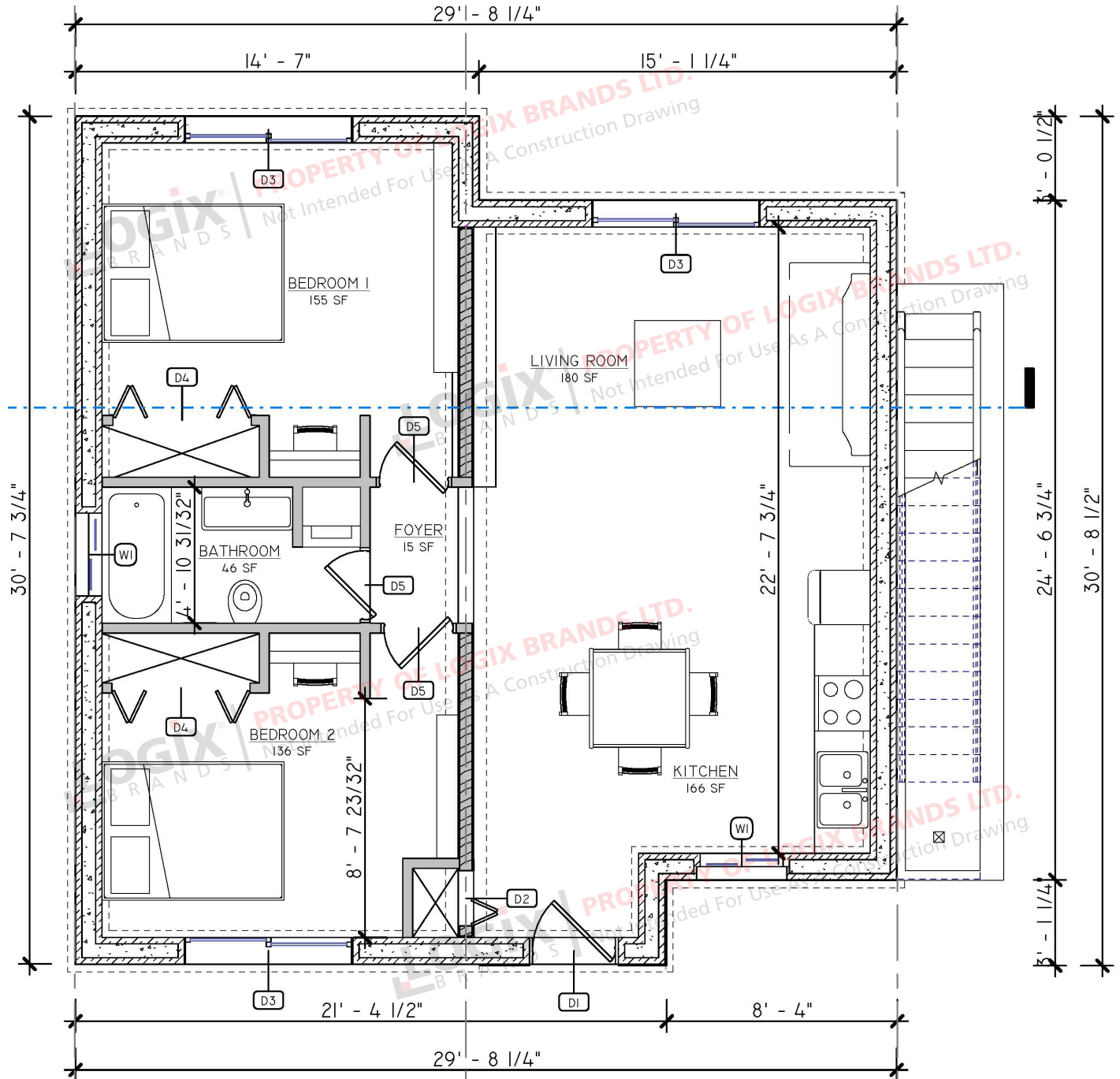


ROOM SCHEDULE:

Name	Level	Area	Perimeter
BATHROOM	First Floor	28' - 6"	46 SF
BEDROOM 1	First Floor	149' - 9"	155 SF
BEDROOM 2	First Floor	247' - 9"	136 SF
FOYER	First Floor	16' - 0"	15 SF
KITCHEN	First Floor	55' - 11 1/2"	166 SF
LIVING ROOM	First Floor	54' - 2 1/2"	180 SF

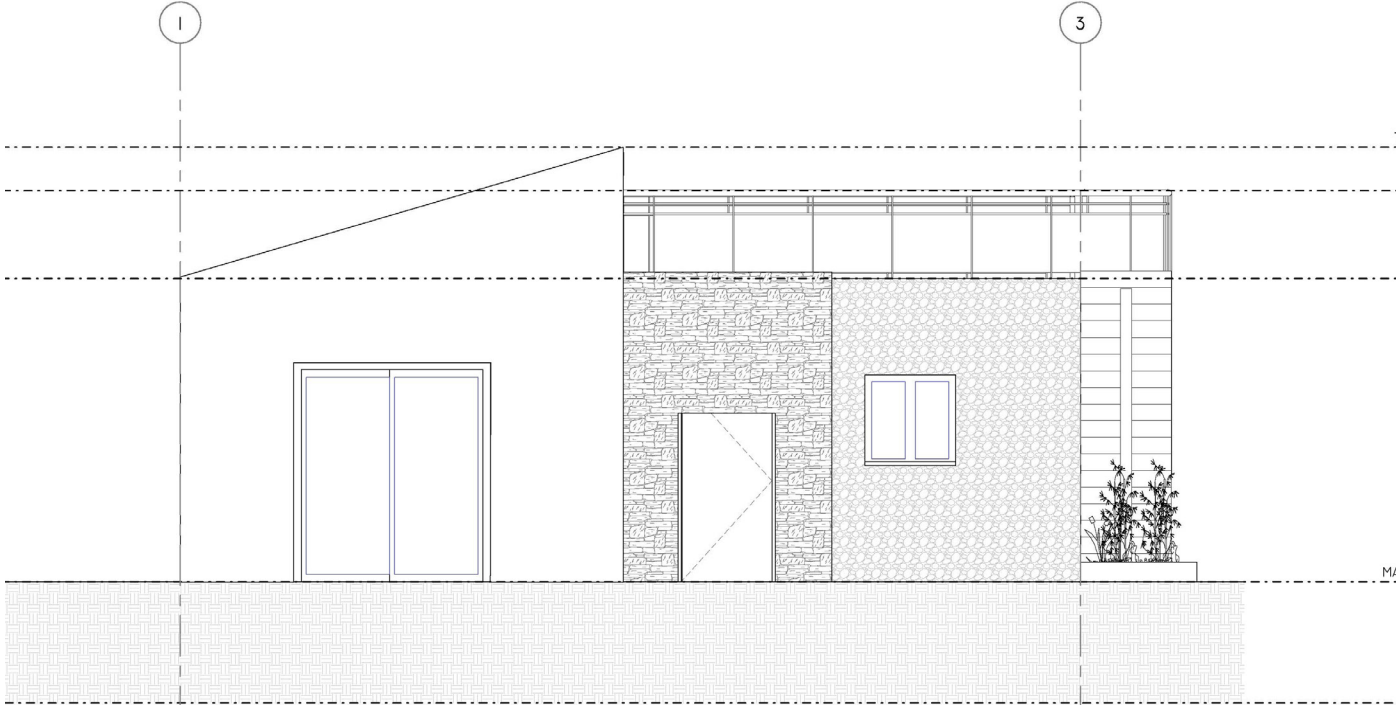
THE WEST COAST 750

Floor Plan - Main Level



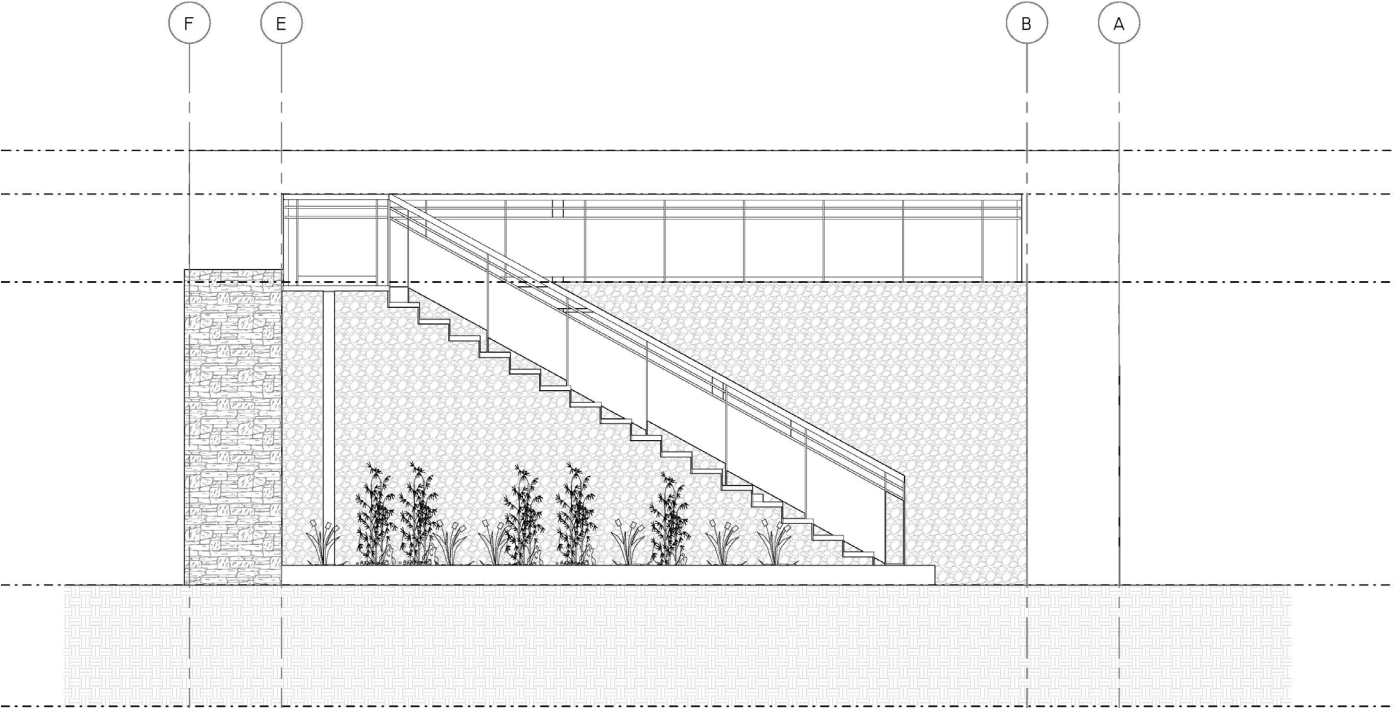
THE WEST COAST 750

Elevations



FRONT ELEVATION

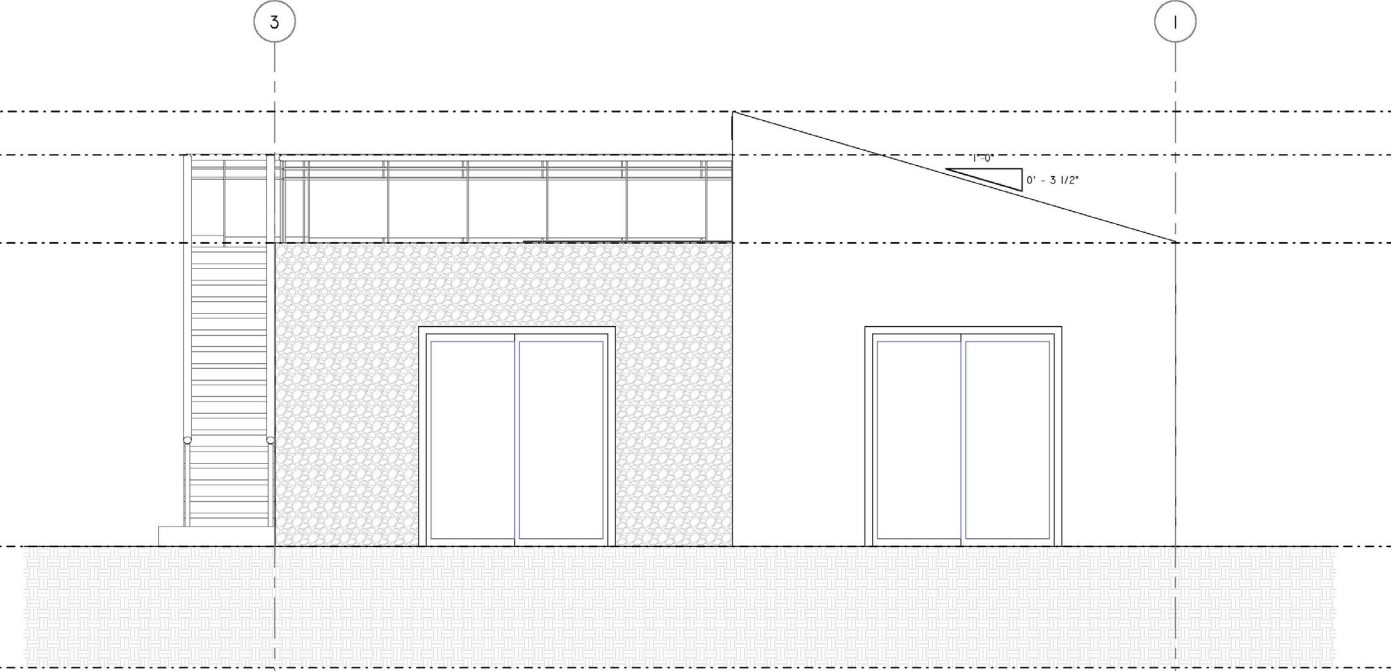
10 - 10



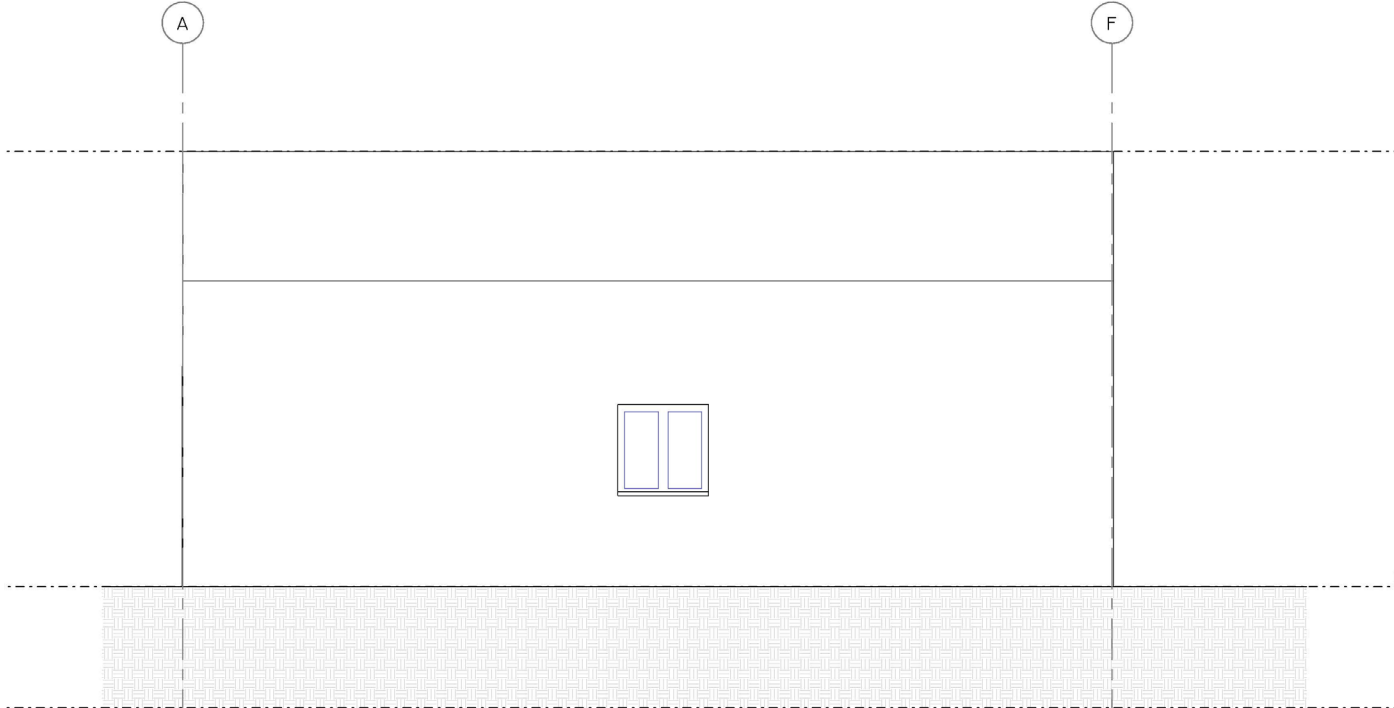
RIGHT ELEVATION

THE WEST COAST 750

Elevations



BACK ELEVATION



LEFT ELEVATION

THE WEST COAST 750

DESIGN, FLOOR PLAN & ELEVATIONS



REQUEST A QUOTE & ORDER A PLAN SET BASED ON THIS DESIGN

Your Element ICF advisor can refer you to a designer who will provide a quotation for your complete plan set including any required modifications.

Please note that some locations may require specific engineering and/or local code adoptions. Be sure to check with your contractor or local building authority to see what is required for your area.

[Go to the Online Collection and Request a Quote for this Plan Set](#)



CONNECT WITH A LOCAL MANUFACTURER

888.838.5038

330 Cain Drive
Haysville, KS 67060-2004

888.453.5961

11581-272 St.
Acheson, AB T7X 6E9

888.706.7709

840 Division St.
Cobourg, ON K9A 5V2

888.453.5961

6333 Unsworth Rd.
Chilliwack, BC V2R 5M3

877.789.7622

35 Headingley Rd.
Headingley, MB R4H 0A8



© Copyright Logix Brands Ltd. (2023) All rights reserved.

No part of the work contained herein as covered by this copyright may be reproduced or used in any form, or any means – graphic, electronic or mechanical, including without limitation photocopying. By using these products, you agree to assume all risks associated therewith. See LogixBrands.com/Disclaimer-General for a full copy of disclaimer.

ELEMENTICF[®]
LOGIX BRANDS

info@elementicf.com
Elementicf.com

A PRODUCT BY
LOGIX[®]
BRANDS

Copyright of Logix Brands Ltd. All Rights Reserved.