

# SMALL HOME DESIGNS PLAN SET PRICING SCHEDULE

These attractive designs have been crafted by selected designers to provide families with strong, long-lasting, disaster-resilient smaller homes that are comfortable, energy-efficient and affordable. All of these homes have been designed to be built with Element ICF. Please note that these are home designs only and these are not “kit homes”.

We are often asked how much these homes will cost when finished. Unfortunately, as we are not builders and, as costs

vary from country to country and region to region, it is impossible for us to provide any turnkey pricing estimates with sufficient accuracy.

However, we are very pleased to provide the pricing for these plan sets and the contact information for the designers. Please purchase your plan sets directly from the designer plan sets and the contact information for the designers. Please purchase your plan sets directly from the designer.

## WADE DESIGN GROUP

DESIGNER OF THE HEARTLAND COLLECTION  
[www.wadedesigngroup.com](http://www.wadedesigngroup.com)

2009 N. Kelly, Suite 150  
Edmond, OK 73003

### KEY CONTACT:

Jerad Stout, Owner/Designer  
405.698.0620  
[Jerad.stout@wadedesigngoup.com](mailto:Jerad.stout@wadedesigngoup.com)

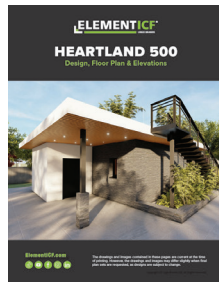
### OTHER INFORMATION:

Fees (all in USD) (taxes not included):

\$750 Heartland 500	\$1400 Heartland 1100*
\$950 Heartland 750	\$1700 Heartland 1250*
\$1200 Heartland 950*	

\* MODEL AVAILABLE “WITH BASEMENT”. FOR “WITH BASEMENT” ADD \$200

- 50% down, 50% upon issuing building permit drawings.
- \$250 flat fee for unlimited changes/modifications.
- Lead Times For Plans: 3 business days with no modifications.



## ELEMENT CONSULTING ENGINEERS

DESIGNER OF THE WEST COAST COLLECTION  
[www.elementeng.ca](http://www.elementeng.ca)

Ult 200 - 7438 Fraser Park Dr.  
Burnaby, BC V5J 5B9

### KEY CONTACT:

Jon Colinares, Principal  
778.895.3212  
[jon@elementeng.ca](mailto:jon@elementeng.ca)

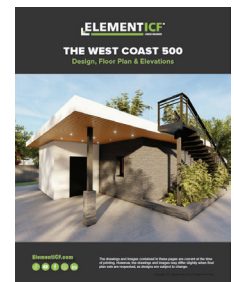
### OTHER INFORMATION:

Fees (all in USD) (taxes not included):

\$750 West Coast 500	\$1400 West Coast 1100*
\$950 West Coast 750	\$1700 West Coast 1250*
\$1200 West Coast 950*	

\* MODEL AVAILABLE “WITH BASEMENT”. FOR “WITH BASEMENT” ADD \$200

- 50% down, 50% upon issuing building permit drawings.
- Minor Modifications (up to 4 hours) are complimentary. Additional modifications are quoted and invoiced separately.
- Lead Times For Plans: 3 business days with no modifications
- Structural drawings can be quoted upon request.



Please note that some locations may require specific engineering and/or local code adoptions.

Be sure to check with your contractor or local building authority to see what is required for your area. Logix Brands Ltd. is not a party to any transaction between the customer and the designer who creates the full plan set based on the preliminary design and/or source files provided by Logix Brands Ltd. Logix Brands Ltd. does not warrant the quality of any work product created by any designer. The accuracy and quality of all work product and advice made by any designer is the responsibility of the designer.

888-415-6449 | [ElementICF.com](http://ElementICF.com) | [info@elementicf.com](mailto:info@elementicf.com)

© Copyright Logix Brands Ltd. 2023 All rights reserved.

No part of the work contained herein as covered by this copyright may be reproduced or used

By using these products, you agree to assume all risks associated therewith. See [LogixBrands.com/Disclaimer-General](http://LogixBrands.com/Disclaimer-General) for a full copy of disclaimer.