

# SMALL HOME DESIGNS

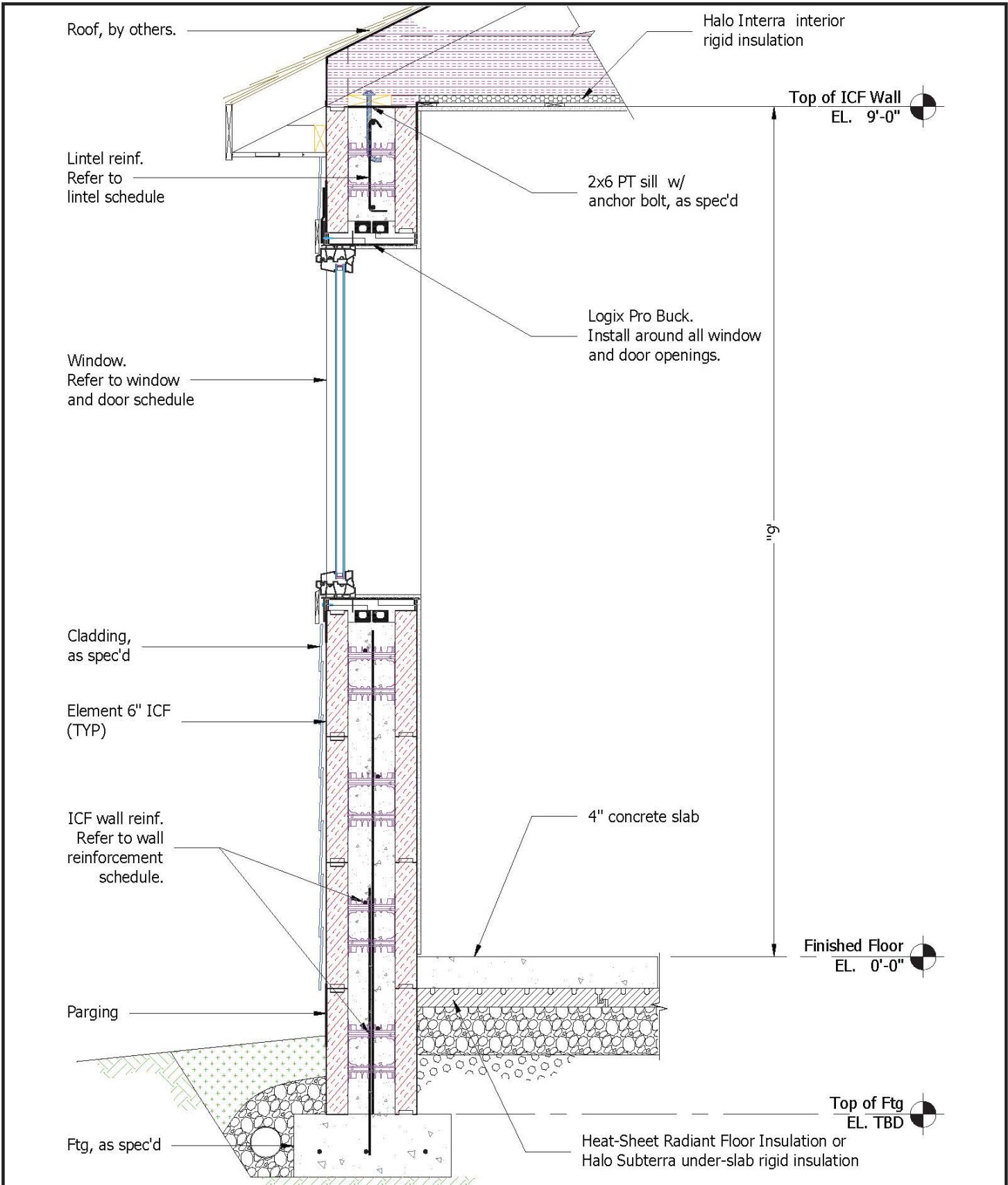
## TYPICAL WALL SECTIONS

Logix Brands Ltd. is not a party to any transaction between the customer and the designer who creates the full plan set based on the preliminary design and/or source files provided by Logix Brands Ltd. Logix Brands Ltd. does not warrant the quality of any work product created by any designer. The accuracy and quality of all work product and advice made by any designer is the responsibility of the designer.

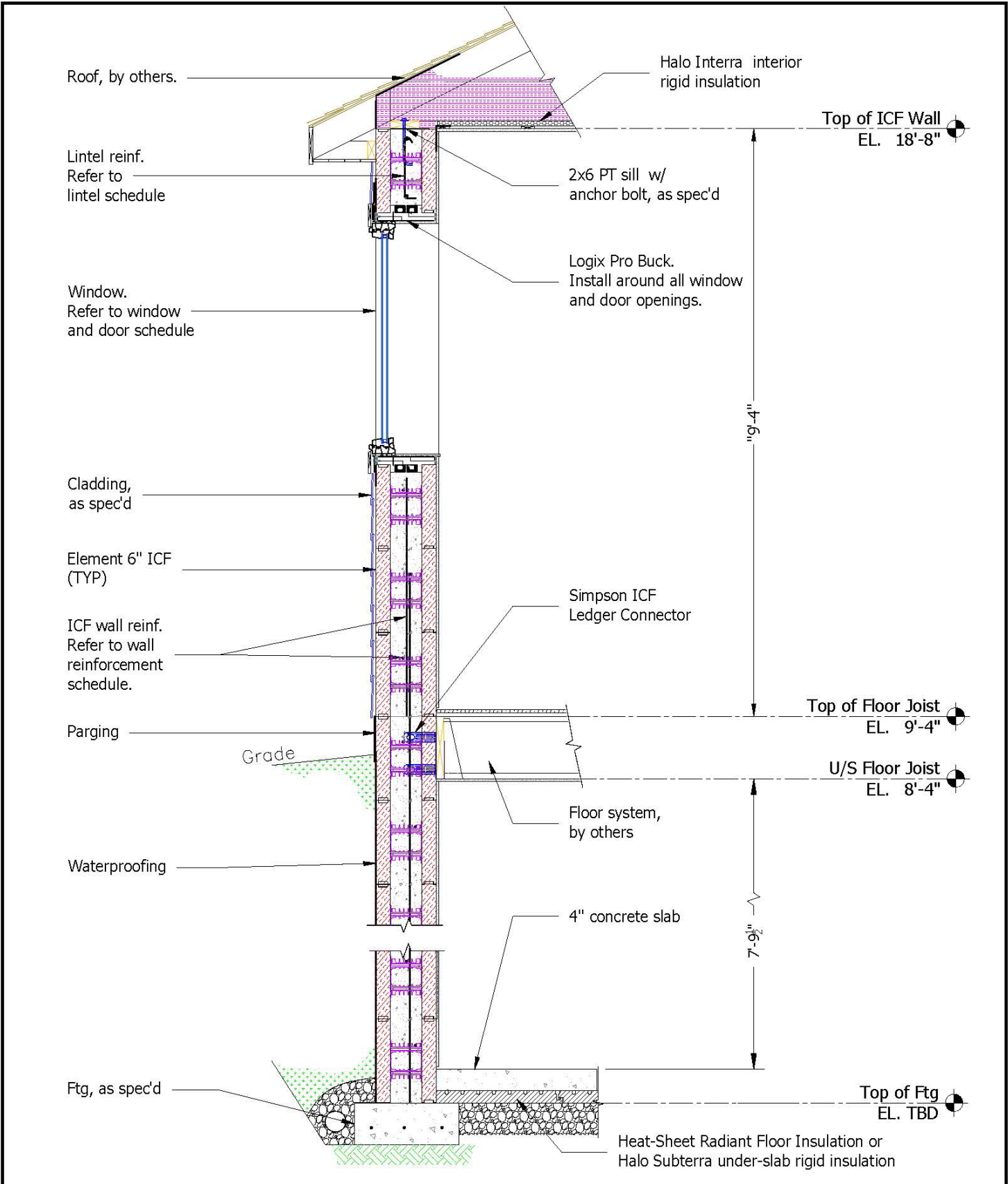
All preliminary designs herein are the property of Logix Brands Ltd. Reproduction hereof, or any use without authorization from Logix Brands Ltd. is a copyright infringement.

[ElementICF.com](http://ElementICF.com)





	<small>©Copyright Logix Brands Ltd. (Year of Publishing) All rights reserved. No part of the work contained herein is covered by this copyright may be reproduced or used in any form, or any means - graphic, electronic or mechanical, including without limitation photocopying.</small>	Drawing: <b>SHW</b>	Date: <b>Dec 12/23</b>	Pg: <b>1/2</b>
	<small>By using these drawings, you agree to assume all risks associated therewith. See Logixbrands.com/Disclaimer-Drawings for a full copy of disclaimer.</small>	Title: <b>ELEMENT ICF SMALL HOME DESIGNS          TYPICAL WALL SECTION - SLAB-AT-GRADE</b>		



	<small>© Copyright Logix Brands Ltd. (Year of Publishing) All rights reserved. No part of the work contained herein as covered by this copyright may be reproduced or used in any form, or any means - graphic, electronic or mechanical, including without limitation photocopying.</small>	Drawing: <b>SHWB</b>	Date: <b>Dec 12/23</b>	Pg: <b>2/2</b>
	<small>By using these drawings, you agree to assume all risks associated therewith. See <a href="http://Logixbrands.com/Disclaimer-Drawings">Logixbrands.com/Disclaimer-Drawings</a> for a full copy of disclaimer.</small>	Title: <b>ELEMENT ICF SMALL HOME DESIGNS          TYPICAL WALL SECTION - WITH BASEMENT</b>		



## CONNECT WITH A LOCAL MANUFACTURER

**888.838.5038**

330 Cain Drive  
Haysville, KS 67060-2004

**888.453.5961**

11581-272 St.  
Acheson, AB T7X 6E9

**888.706.7709**

840 Division St.  
Cobourg, ON K9A 5V2

**888.453.5961**

6333 Unsworth Rd.  
Chilliwack, BC V2R 5M3

**877.789.7622**

35 Headingley Rd.  
Headingley, MB R4H 0A8



© Copyright Logix Brands Ltd. (2023) All rights reserved.

No part of the work contained herein as covered by this copyright may be reproduced or used in any form, or any means – graphic, electronic or mechanical, including without limitation photocopying. By using these products, you agree to assume all risks associated therewith. See [LogixBrands.com/Disclaimer-General](https://LogixBrands.com/Disclaimer-General) for a full copy of disclaimer.

**ELEMENTICF**<sup>®</sup>  
LOGIX BRANDS

[info@elementicf.com](mailto:info@elementicf.com)  
[Elementicf.com](https://Elementicf.com)

A PRODUCT BY  
**LOGIX**<sup>®</sup>  
BRANDS