

Want to build a more
comfortable energy-efficient home?

KEEP IT SIMPLE.

ELEMENTICF[®]
LOGIX BRANDS

ElementICF.com

TREAT YOURSELF TO HIGH QUALITY CONCRETE CONSTRUCTION.

BUILT-IN COST-SAVINGS!

Six construction steps.
One simple package.

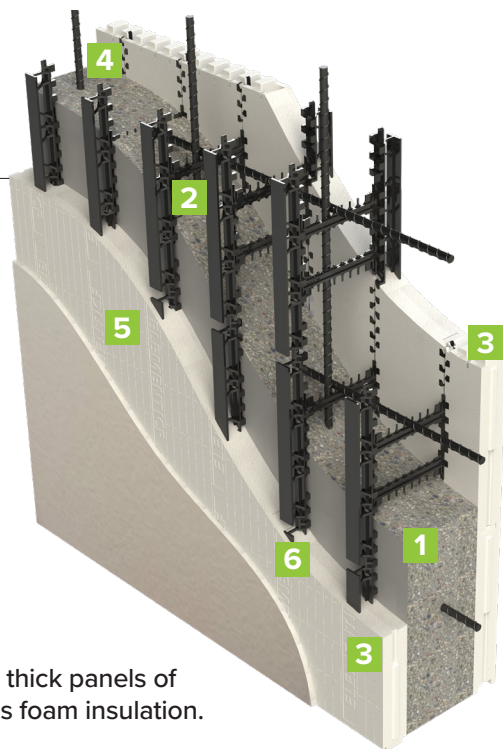
= Less labor

= Lower construction costs

= Faster builds

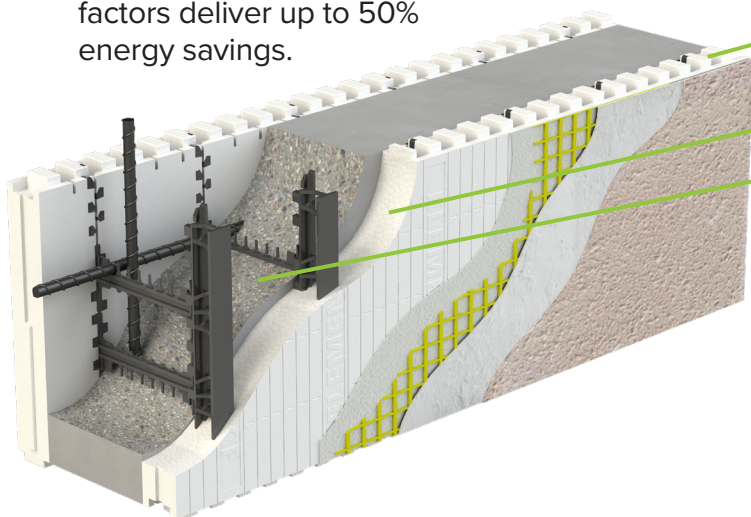
CONSTRUCTION STEPS

- 1 CONCRETE
- 2 STEEL REINFORCEMENT
- 3 INSULATION
- 4 AIR BARRIER
- 5 VAPOR BARRIER
- 6 FURRING STRIPS



BUILT-IN ENERGY-SAVERS!

- THREE built-in energy-saving factors deliver up to 50% energy savings.

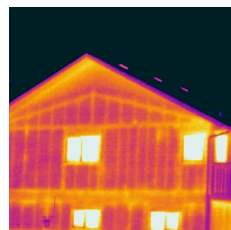


- 1 Two 2.75" thick panels of continuous foam insulation.
- 2 An air-tight wall assembly.
- 3 The temperature moderating thermal mass of concrete.

Typical Wall Assembly R-Value is R-24

Typical Wall Assembly Components: exterior air film, hollow-backed vinyl siding, 2.75" EPS, 6" concrete, 2.75" EPS, drywall, interior air film.

In a recent lab test, when exposed to a sudden -31°F temperature, an ICF wall allowed the temperature of the interior chamber to maintain at a comfortable 70°F for a full two days without the heat source even turning on once! (With a wood wall the heater turned on almost immediately.)



Thermal image of a conventionally built home



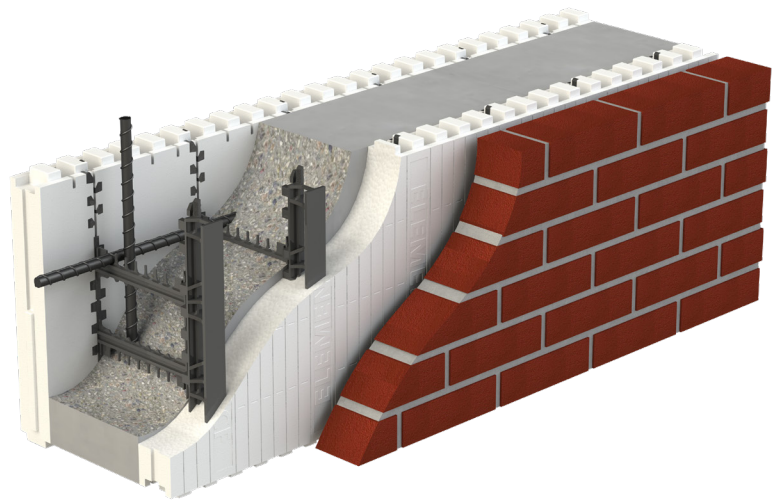
Thermal image of a home with ICFs.



ENJOY A LIFETIME OF LUXURY LIVING.

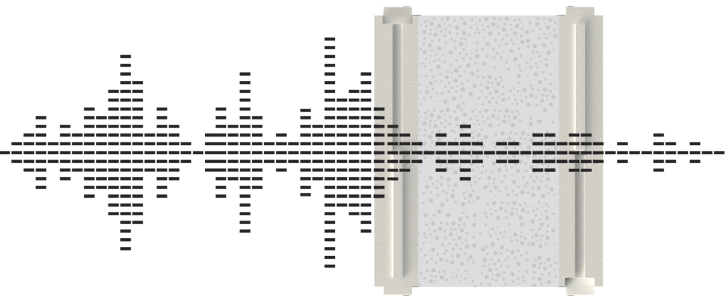
BUILT-IN RESILIENCE!

- **Wind Protection**
Wind-rated to over 300 mph
- **Fire Protection**
4-hour fire rating
- **Earthquake Protection**
Engineering available for all seismic zones
- **Moisture Protection**
Does not rot!



BUILT-IN COMFORT!

- Drafts and cold spots in the home are eliminated in northern climates.
- Humidity is easily controlled in warm, moist climates.
- EPS foam and concrete do not off-gas unhealthy, allergy-aggravating emissions.
- No nutrient source exists in the Element ICF wall assembly for unhealthy mold growth.



Outside noise is reduced to a whisper.

Exceptional Foundations

Build your foundation with Element ICF and your basement will feel like another main level in your home.



Exceptional Homes

Build your entire home with high quality concrete construction and you will enjoy an exceptional home that meets your family's need for greater safety, comfort and energy efficiency. Upgrade to Element ICF and enjoy luxury living for a lifetime.

Although the up-front cost of an ICF home may be slightly higher than a traditional wood-framed home, the actual "overall living" cost can often be lower.

	Traditional Wood Frame	ICF
House Price	\$400,000	\$420,000
Monthly Mortgage	\$2,526	\$2,652
Monthly Energy Bill	\$350	\$150
Total Monthly Cost	\$2,876	\$2,802
Monthly Savings	\$0	\$74

The above are estimates only. Construction, mortgage and energy costs may vary depending on style/design and location of home.



**ASK US
ANYTHING
»»» 24/7**

Important Disclaimer: Some of the images contained herein are of projects built using Logix ICF and are shown solely for illustrative purposes of an ICF system. These images are based on Logix ICF, and may not be relied upon in connection with a build using Element ICF. No guarantee, warranty, or representation whatsoever is made that Element ICF will be available as depicted, or, if available, will be of the same type, size, quality, location, or nature as depicted or illustrated in the images and videos contained herein.

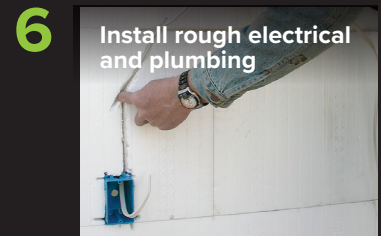
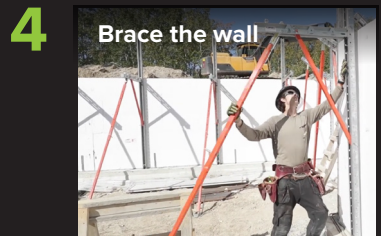
© Copyright Logix Brands Ltd. (2023) All rights reserved. No part of the work contained herein as covered by this copyright may be reproduced or used in any form, or any means – graphic, electronic or mechanical, including without limitation photocopying. By using these products, you agree to assume all risks associated therewith. See LogixBrands.com/Disclaimer-General for a full copy of disclaimer.

ELEMENTICF[®]
LOGIX BRANDS
Keep it Simple.[™]

info@elementicf.com
888.415-6449
ElementICF.com

Thousands of builders have taken our training programs and are available to offer you competitive pricing for your project.

6 SIMPLE CONSTRUCTION STEPS



A PRODUCT BY
LOGIX[®]
BRANDS