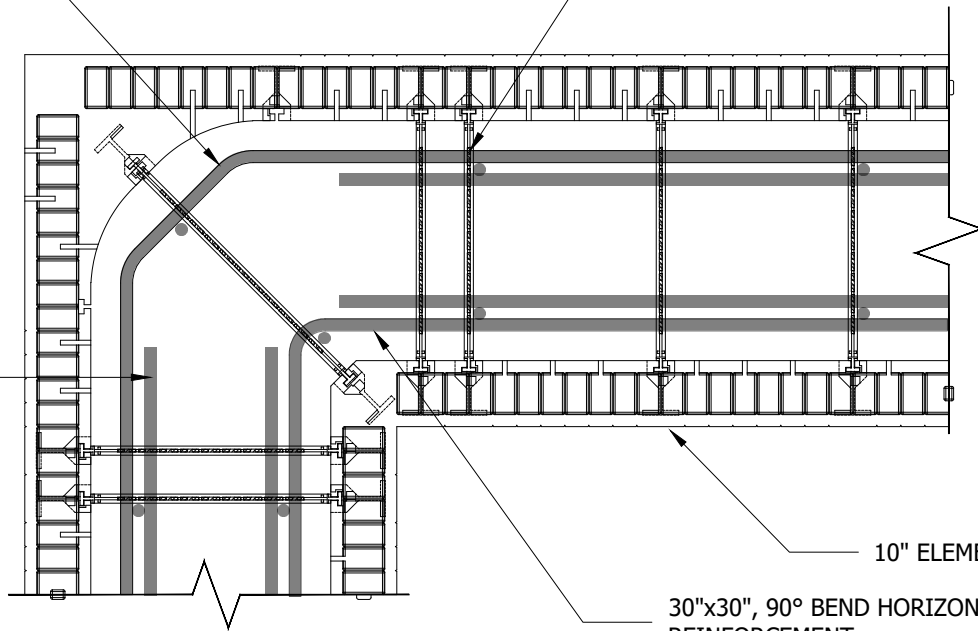


HORIZONTAL CORNER REINFORCEMENT. SEE DETAIL A

REBAR SLOT LOCATIONS SHADED FOR CLARITY

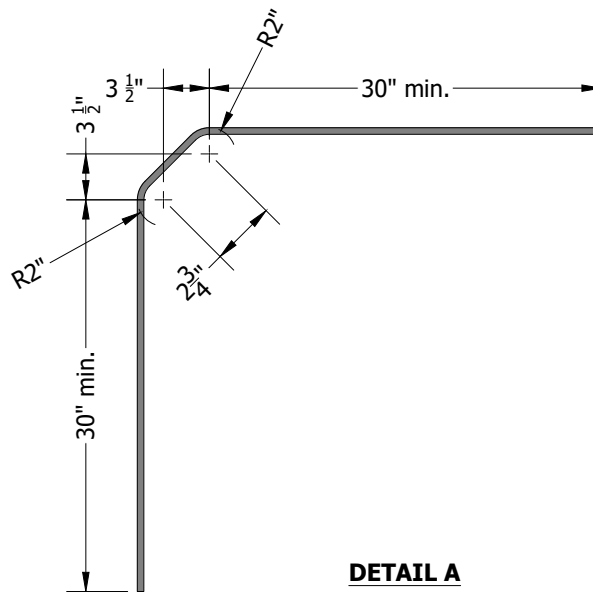
HORIZONTAL ICF WALL REINF.



10" ELEMENT ICF

30"x30", 90° BEND HORIZONTAL CORNER REINFORCEMENT

ELEMENT 10" CORNER



**DETAIL A
CORNER REINFORCEMENT DETAIL
(NTS)**

NOTES:

1. Details shown are typical corner double mat reinforcement examples. Alternate details are permitted and may be dictated by design and code requirements.
2. Rebar shown are #4 (15M) bars.
3. Lap length between horizontal corner bar and horizontal ICF wall reinforcement is 30" minimum for #4 (15M) bars or smaller.
4. Noncontact lap splices permitted. Shall not exceed the smaller of $\frac{1}{5}$ lap splice and 6".



©Copyright Logix Brands Ltd. (2024) All rights reserved. No part of the work contained herein as covered by this copyright may be reproduced or used in any form, or any means - graphic, electronic or mechanical, including without limitation photocopying.

By using these drawings, you agree to assume all risks associated therewith. See Logixbrands.com/Disclaimer-Drawings for a full copy of disclaimer.

Drawing:
5.14.2.6

Date:
May 02/25

Pg:
1/1

Title:
**DOUBLE MAT REINFORCEMENT AT
ELEMENT 10in CORNER**